

MINI GREEN SERIES



The Mini Green Series

Do not be fooled by its size. This **sleek desktop** brings a whole new meaning to efficiency and security. With a volume of **only 2.3L**, the desktops in this series are perfectly suited for demanding business environments.

Take productivity to the next level with **Intel® Core™ processing, DDR4 and DDR5 memory up to 64GB, and fast PCIe SSD storage options.** The desktops from the Mini Green Series stand for **speed, reliability, and flexibility.** With extensive connectivity, a robust design, and specialized security features, this series provides **long-term value** for those seeking secure and sustainable technology solutions.

This desktop takes sustainability seriously: **it is built to last.** Investing in the Mini Green Series means prioritizing **longevity, reducing electronic waste** and **maintaining high productivity.** Start prioritizing your work the green way with the Mini Green Series.

Compact design, Great capabilities.



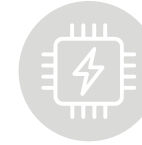
Compact design
Optimizes space



Always On
24/7 power



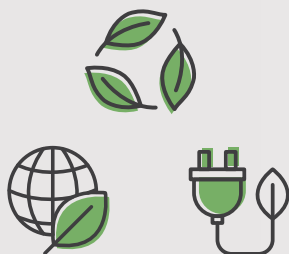
Highly Serviceable
Designed to be repairable



Efficiency & Power
Unbeatable Performance



SUSTAINABLE FEATURES



We prioritize the use of **recycled or recyclable materials** and the **reduction of hazardous substances** throughout our manufacturing process. Our devices contain up to **80% recycled plastic⁽¹⁾**.

Our packaging is **FSC certified**, and we provide multipack options for even less waste.

Furthermore, the devices also have **Energy Star certification**, meaning they are submitted to rigorous third-party testing, ensuring the desktop consume less energy compared to similar non-certified models and resulting in cost savings and **reduced environmental impact**.

Front 5 USB Ports Type-A & Type-C / AUDIO Combo
Connect multiple peripherals



Complete connectivity options
Connect all type of USB (Type-A & Type-C) and VIDEO interfaces (HDMI / DP / VGA)



CONFIGURATION OPTIONS

OS • Windows 11® Pro*

CPU • Intel Raptor Lake | Meteor Lake | Arrow Lake (SoC & Socket)

Memory • Up to 64GB DDR4 / DDR5

Storage • Up to 2TB PCIe SSD | internal SSD SATA 2.5" (Optional)

I/O • 1x DC/AC-in | 1x HDMI, 1x DP (HDMI/VGA optional) | 1x Combo Audio Front jack | 4x USB 3.2 Type-A | 2x USB 2.0 Type-A | 1x USB 3.2 Type-C | Spk/Mic Audio Rear jacks

Connectivity • Gigabit Ethernet | Wi-Fi 5 & 6 (up to 802.11ax) | Bluetooth up to 5.2

Audio • integrated HD-Audio Controller | internal Speaker (optional)

Form-Factor • USFF Format 2.3L / 198(W)*212(D)*53(H)mm

Power Supply • External AC-DC Adapter up to 150W / Internal AC PSU up to 250W (optional)

Additional • Desktop Stand (optional) | support VESA 100x100mm & Kensington Lock | Chassis intrusion (optional)

*Available with multiple operating system options, depending on the region.

Energy Star Certified



jp.ik's contribution for sustainability

Our devices come with certified FSC Packaging. This means that it uses the least amount of materials possible, and that they all come from certified producers, with forest management standards that protect water quality, old grown forests cover and prevent hazardous chemicals.

⁽¹⁾ Depending on the device.