

# NANO SERIES



## The Nano Series

Do not be fooled by its size. This ultracompact desktop brings a whole new meaning to efficiency and performance. With a **volume of only 0.5L**, the desktops in this series are perfectly suited for demanding business environments where **space optimisation is essential**.

Take productivity to the next level with **Intel® Core™ processing, DDR5/LPDDR5 memory up to 64GB, and fast dual PCIe SSD storage options**. The desktops from the Nano Series stand for **speed, reliability, and flexibility**. With extensive connectivity and an aesthetic design, this series provides long-term value for those seeking sustainable technology solutions.

This desktop takes sustainability seriously: it is built for durability and extended use. Investing in the Nano Series means **prioritizing longevity, reducing electronic waste**, and maintaining **high productivity**. Start prioritizing your work the smart and sustainable way with the **Nano Series**.

## ULTRACOMPACT DESIGN. GREAT CAPABILITIES.



### Small Footprint

Powerful compact PC designed for space-efficient environments



### Always On

Reliability for continuous business operations



### Low Power Device

Best performance per watt, optimized for energy efficiency

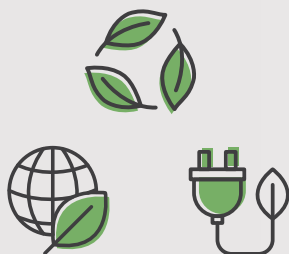


### Quiet Operation

Optimized for office and professional environments



## SUSTAINABLE FEATURES



We prioritize the use of **recycled or recyclable materials** and the **reduction of hazardous substances** throughout our manufacturing process. Our devices contain up to **80% recycled plastic<sup>(1)</sup>**.

Our packaging is **FSC certified**, and we provide multipack options for even less waste.

Furthermore, the devices also have devices are **EnergyStar Ready**, meaning they are submitted to rigorous third-party testing, ensuring the desktop consume less energy compared to similar non-certified models and resulting in cost savings and **reduced environmental impact**.



**Complete connectivity options**  
Connect all type of USB (Type-A & Type-C) and VIDEO interfaces (HDMI / DP / USB-C)



**Front 3 USB Ports Type-A & Type-C / AUDIO Combo**

<sup>(1)</sup> Depending on the device.

## CONFIGURATION OPTIONS

**OS** • Windows 11® Pro\*

**CPU** • Intel Raptor Lake | Meteor Lake | Arrow Lake (SoC Only)

**Memory** • Up to 64GB DDR4 / DDR5

**Storage** • Up to 2TB PCIe SSD | internal SSD SATA (Optional)

**I/O** • 1x DC-in (3.5Ø) | 1x HDMI, 1x DP (HDMI optional) | 1x Combo Audio Front jack | 4x USB 3.2 Type-A | 2x USB 2.0 Type-A | 1x USB 3.2 Type-C

**Connectivity** • Gigabit Ethernet | Wi-Fi 5 & 6 (up to 802.11ax) | Bluetooth up to 5.2

**Audio** • Integrated HD-Audio Controller

**Form-Factor** • NUC Format 0,5L / 128(W)\*128(D)\*41.3(H)mm

**Power Supply** • External AC-DC Adapter up to 90W

**Additional** • support VESA 100x100mm & Kensington Lock | Energy Star Ready

\*Available with multiple operating system options, depending on the region.



**jp.ik's contribution for sustainability**

**Our devices come with certified FSC Packaging.** This means that it uses the least amount of materials possible, and that they all come from certified producers, with forest management standards that protect water quality, old grown forests cover and prevent hazardous chemicals.