

# LEAP T Green



**LEAP T Green** is developed with sustainability in mind. Built to last, this 11.6" laptop has rugged features that make it resistant to drops and spills, while still maintaining a lightweight and slim design.

Combined with highly serviceable components like the **keyboard with snap-safe keys**, its lifespan is doubled compared to other commercial devices.

Investing in longevity not only saves money but also **reduces electronic waste** and environmental impact, contributing to a more sustainable future.

## Eco-driven Innovation



**Snap-safe Keys**  
Prolonged  
keyboard life



**Highly Serviceable**  
Designed to be  
repairable



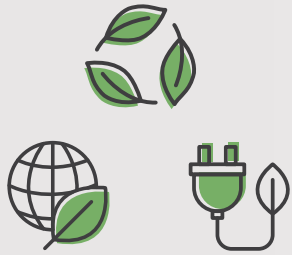
**Water and Drop  
resistance**  
200cc | 76cm



**Extended Lifespan**  
Reduces electronic  
waste



## SUSTAINABLE FEATURES



We prioritize the use of **recycled or recyclable materials** and the **reduction of hazardous substances** throughout our manufacturing process. Our devices contain up to **80% recycled plastic<sup>(1)</sup>**.

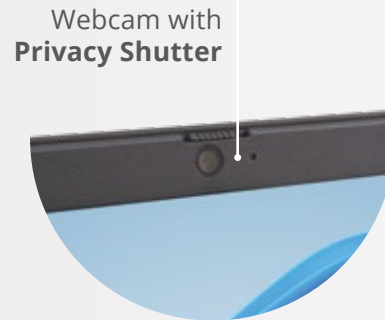
Furthermore, the devices also have **Energy Star certification**, meaning they are submitted to rigorous third-party testing, ensuring the laptops consume less energy compared to similar non-certified models and resulting in cost savings and **reduced environmental impact**.



**180° Opening**  
Preventing accidental breaks



**Up to 99% confidence level** in drop and water resistance tests<sup>(2)</sup>



Webcam with **Privacy Shutter**

## SUGGESTED CONFIGURATION

**OS** • Windows® 11

**CPU** • Intel® Jasper Lake / Intel® Alder Lake N / Intel® Twin Lake

**Memory** • Up to 16GB DDR4

**Storage** • Up to 128GB eMMC / up to 2TB SSD

**Display** • 11.6" HD / FHD

**I/O** • 1x DC-in, 2x USB-A, 1x USB-C, 1x HDMI, 1x Combo Audio Jack, 1x Micro SD, 1x SIM (Optional)

**Speaker & Mic** • Built-in 2x 1.0 W Speakers | DMIC

**Security** • Kensington Lock

**Connectivity** • Wi-Fi 5 / Wi-Fi 6 / Bluetooth up to 5.2 / LTE (Optional)

**Camera** • 1/2MP (Optional) | Flash LED

**Battery** • 38Wh / 41.8Wh

**Ruggedness** • 100cm Drop Resistant (MIL-STD-810H) | 500cc Water Resistant on KB+TP | IP5x Dust Resistance

**Weight** • <1.3kg

**Dimensions** • 288 × 196 × 20.6 mm

*Available with multiple operating system options, depending on the region.*

**ikES**

**LEAP T Green** comes with ikES, a ready-to-use software package with several education apps, providing all the tools necessary to support teachers in the classroom and engage students in learning activities.



jp.ik is an EPEAT Participating Brand.

<sup>(1)</sup> Depending on the device.

<sup>(2)</sup> Devices with high confidence levels in drop tests and water resistance are designed to withstand real-world challenges, making them reliable in various environments.