

LEAP W506



LEAP W506 offers a seamless user experience that enhances productivity. From intensive workloads to demanding creative projects, this laptop is designed to handle it all with effortless efficiency. The long battery life up to 8h hours also keep you powered up and productive for longer.

Combined with **highly serviceable components** like the keyboard with snap-safe keys, its lifespan is doubled compared to other commercial devices.

Investing in longevity not only saves money but also **reduces electronic waste** and environmental impact, contributing to a more sustainable future.

Sustainable design that **POWERS PRODUCTIVITY**



Snap-safe Keys
Prolonged
keyboard life



Highly Serviceable
Designed to be
repairable



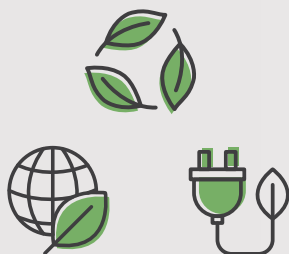
**Water and Drop
resistance**
200cc | 76cm



Extended Lifespan
Reduces electronic
waste



SUSTAINABLE FEATURES



We prioritize the use of **recycled or recyclable materials** and the **reduction of hazardous substances** throughout our manufacturing process. Our devices contain up to **80% recycled plastic⁽¹⁾**.

Our packaging is **FSC certified**, and we provide multipack options for even less waste.

Furthermore, the devices also have **Energy Star certification**, meaning they are submitted to rigorous third-party testing, ensuring the laptops consume less energy compared to similar non-certified models and resulting in cost savings and **reduced environmental impact**.



Up to 99% confidence level in drop and water resistance tests⁽²⁾

Webcam with Privacy Shutter



4 USB ports
Connect multiple peripherals



⁽¹⁾ Depending on the device.

⁽²⁾ Devices with high confidence levels in drop tests and water resistance are designed to withstand real-world challenges, making them reliable in various environments.

SUGGESTED CONFIGURATION

OS • Windows® 11

CPU • Intel® Core® i3-1215U | Intel® Core® i5-1235U | Intel® Core® i7-1255U

Memory • Up to 64GB DDR4

Storage • Up to 512GB SSD (SATA and PCIe supported)

Display • 14" 1366 x 768 TN | 1920 x 1080 IPS (Optional)

I/O • 1x DC-in | 3x USB 3.2 Type-A | 1x USB 3.2 Type-C | 1x HDMI
1x Audio combo jack | 1x Micro SD Card Reader | 1x SIM Card slot (Optional)
1x RJ45 (Optional)

Speaker & Mic • Build-in 2 speakers 1.0W | 2x DMIC

Security • fTPM 2.0, Kensington Lock

Connectivity • Wi-Fi 5 (802.11ac) | Wi-Fi 6 (802.11ax) | Bluetooth up to 5.2
LTE (Optional) | RJ45 (Optional)

Camera • 1/2MP (Optional) with flash LED & Privacy Shutter

Battery • 57Wh

Ruggedness • Drop resistant up 76cm (MIL STD 810H) | Water resistance
200cc on keyboard and Touchpad (IP5X)

Weight • 1.65kg

Dimensions • 335 x 225 x 20.6 mm



LEAP W506 comes with ikES, a ready-to-use software package with several education apps, providing all the tools necessary to support teachers in the classroom and engage students in learning activities.



jp.ik is an EPEAT Participating Brand.

jp.ik's contribution for sustainability

Our devices come with **certified FSC Packaging**. This means that it uses the least amount of materials possible, and that they all come from certified producers, with forest management standards that protect water quality, old grown forests cover and prevent hazardous chemicals.