

TURN Genie W601

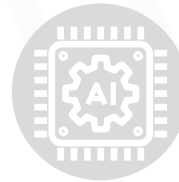


TURN Genie W601 is the only 14" 360° convertible device with rugged features on the market. It is our first AI ready device, with Intel Core Ultra processors that feature improved power efficiency, enhanced graphical power, and a significant leap in AI processing that allow to smoothly perform AI related tasks.

Combined with highly serviceable components like the keyboard with snap-safe keys, its **lifespan is doubled** compared to other commercial devices.

Investing in longevity not only saves money but also **reduces electronic waste and environmental impact**, contributing to a more sustainable future.

Step into a new world of **AI POSSIBILITIES**



AI ready
Intel® Core™
Ultra CPU



Highly Serviceable
Designed to be
repairable



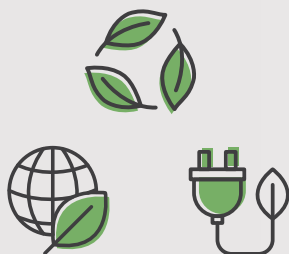
**Water and Drop
resistance**
200cc | 76cm



Extended Lifespan
Reduces electronic
waste



SUSTAINABLE FEATURES



We prioritize the use of **recycled or recyclable materials** and the **reduction of hazardous substances** throughout our manufacturing process. Our devices contain up to **80% recycled plastic⁽¹⁾**.

Our packaging is **FSC certified**, and we provide multipack options for even less waste.

Furthermore, the devices also have **Energy Star certification**, meaning they are submitted to rigorous third-party testing, ensuring the laptops consume less energy compared to similar non-certified models and resulting in cost savings and **reduced environmental impact**.



Up to 99% confidence level in drop and water resistance tests⁽²⁾



Intuitive port identification
Providing accessibility and inclusivity for all



LED indicators
Wi-Fi and Power



Rotatable Webcam
with **Privacy Shutter**



SUGGESTED CONFIGURATION

OS • Windows® 11

CPU • Intel® Core™ Ultra 5 125U | Intel® Core™ Ultra 7 155U

Memory • Up to 32GB DDR4

Storage • Up to 512GB SSD (SATA and PCIe supported)

Display • 14" IPS HD 1920 x 1080 Anti-Glare Multi-Touch

I/O • 3x USB 3.2 Type-A | 2x USB 3.2 Type-C (FF & Fast Charging) | 1x HDMI 2.0
1x SD Card slot | 1x Combo Audio jack | 1x SIM Card slot (Optional) | 1x RJ45

Security • 2x Kensington Lock slot

Connectivity • Wi-Fi 5 (ac) 1x1 + Bluetooth 5.0 | Wi-Fi 5 (ac) 2x2 + Bluetooth 5.0 | Wi-Fi 6 (ax) 2x2 + Bluetooth 5.2

Camera • 2MP FF with LED indicator, Microlens Support and Privacy Shutter

Battery • 65Wh

Adapter • 65Wh

Ruggedness • 76cm Drop Resistant (MIL-STD-810H) | 200cc Water Resistant on KB and TP | IP4x Dust Resistant

Weight • 1.75kg

Dimensions • 345 x 235 x 22 mm

Accessories • Active Stylus



TURN Genie W601 comes with ikES, a ready-to-use software package with several education apps, providing all the tools necessary to support teachers in the classroom and engage students in learning activities.



jp.ik is an EPEAT Participating Brand.

jp.ik's contribution for sustainability

Our devices come with certified FSC Packaging. This means that it uses the least amount of materials possible, and that they all come from certified producers, with forest management standards that protect water quality, old grown forests cover and prevent hazardous chemicals.

⁽¹⁾ Depending on the device.

⁽²⁾ Devices with high confidence levels in drop tests and water resistance are designed to withstand real-world challenges, making them reliable in various environments.