

# TURN W501



**TURN W501** is the only 14" 360° convertible device with rugged features on the market. It features the productivity of a laptop with versatility of a tablet and a long battery life up to 8 hours to keep you powered up for longer.

Combined with highly serviceable components like the keyboard with snap-safe keys, its **lifespan is doubled** compared to other commercial devices.

Investing in longevity not only saves money but also **reduces electronic waste and environmental impact**, contributing to a more sustainable future.

## Redefining mobility **REDUCING FOOTPRINT**



**Snap-safe Keys**  
Prolonged  
keyboard life



**Highly Serviceable**  
Designed to be  
repairable



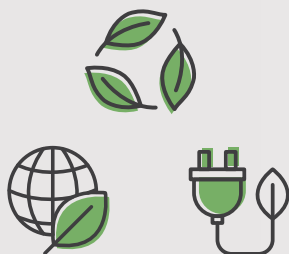
**Water and Drop  
resistance**  
200cc | 76cm



**Extended Lifespan**  
Reduces electronic  
waste



## SUSTAINABLE FEATURES



We prioritize the use of **recycled or recyclable materials** and the **reduction of hazardous substances** throughout our manufacturing process. Our devices contain up to **80% recycled plastic**<sup>(1)</sup>.

Our packaging is **FSC certified**, and we provide multipack options for even less waste.

Furthermore, the devices also have **Energy Star certification**, meaning they are submitted to rigorous third-party testing, ensuring the laptops consume less energy compared to similar non-certified models and resulting in cost savings and **reduced environmental impact**.



Up to 99% confidence level in drop and water resistance tests<sup>(2)</sup>



**Intuitive port identification**  
Providing accessibility and inclusivity for all



**LED indicators**  
Wi-Fi and Power



**Rotatable Webcam**  
with **Privacy Shutter**



<sup>(1)</sup> Depending on the device.

<sup>(2)</sup> Devices with high confidence levels in drop tests and water resistance are designed to withstand real-world challenges, making them reliable in various environments.

## SUGGESTED CONFIGURATION

**OS** • Windows® 11

**CPU** • Intel® Core™ i3-1215U | Intel® Core™ i5-1235U | Intel® Core™ i7-1255U

**Memory** • Up to 32GB DDR4

**Storage** • Up to 512GB SSD (SATA and PCIe supported)

**Display** • 14" IPS HD 1920 x 1080 Anti-Glare Multi-Touch

**I/O** • 3x USB 3.2 Type-A | 2x USB 3.2 Type-C (FF & Fast Charging) | 1x HDMI 2.0  
1x SD Card slot | 1x Combo Audio jack | 1x SIM Card slot (Optional) | 1x RJ45

**Security** • 2x Kensington Lock slot

**Connectivity** • Wi-Fi 5 (ac) 1x1 + Bluetooth 5.0 | Wi-Fi 5 (ac) 2x2 + Bluetooth 5.0 | Wi-Fi 6 (ax) 2x2 + Bluetooth 5.2

**Camera** • 2MP FF with LED indicator, Microlens Support and Privacy Shutter

**Battery** • 5628mAh / 65Wh

**Ruggedness** • Drop resistant up 76cm (MIL STD 810H) | Dust and Liquid spill resistant IP4X

**Weight** • 1.75kg

**Dimensions** • 345 x 235 x 22 mm

**Accessories** • Active Stylus



**TURN W501** comes with ikES, a ready-to-use software package with several education apps, providing all the tools necessary to support teachers in the classroom and engage students in learning activities.



jp.ik is an EPEAT Participating Brand.

### jp.ik's contribution for sustainability

Our devices come with **certified FSC Packaging**. This means that it uses the least amount of materials possible, and that they all come from certified producers, with forest management standards that protect water quality, old grown forests cover and prevent hazardous chemicals.