



Imágenes ilustrativas

User Manual

KIT RASPBERRY Model: TURING R 01 Kit

The information contained in this product brochure may change without notice.

For more information, please contact:

sales@jpik.com | www.jpik.com

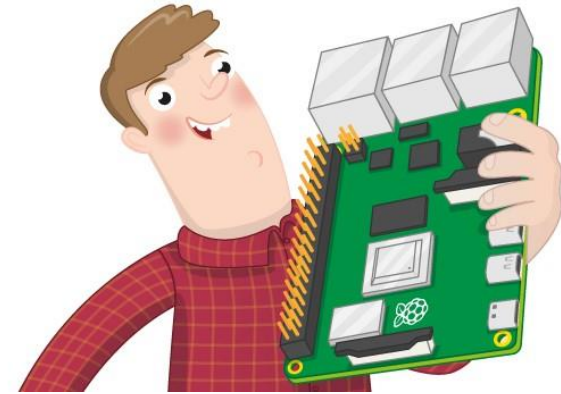
jp.ik
jp.ik is a brand of JP Sá Couto

mymaga
mymaga is a brand of JP Sá Couto

Setting up your Raspberry Pi

How to set up and start your Raspberry Pi for the first time

Raspberry Pi



The information contained in this product brochure may change without notice.

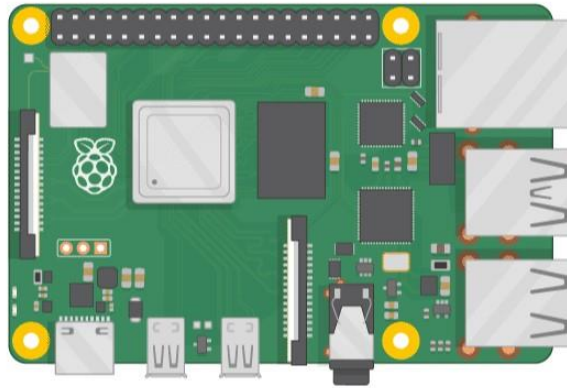
For more information, please contact:

sales@jpik.com | www.jpik.com

jp.ik
jp.ik is a brand of JP Sá Couto

 mymaga
mymaga is a brand of JP Sá Couto

Here you'll learn about your Raspberry Pi, what things you need to use it, and how to set it up.



If you need to print this project, please use the printer-friendly version (<https://projects.raspberrypi.org/en/projects/raspberry-pi-setting-up/print>).

The information contained in this product brochure may change without notice.

For more information, please contact:

sales@jpik.com | www.jpik.com

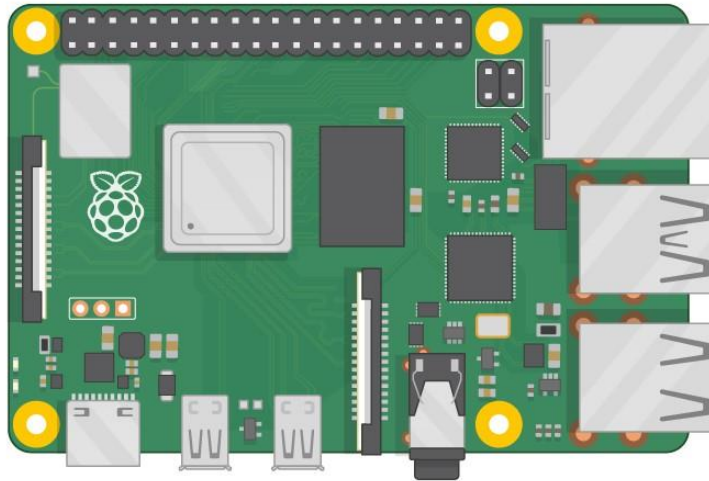
jp.ik
jp.ik is a brand of JP Sá Couto

mymaga
mymaga is a brand of JP Sá Couto

Which Raspberry Pi?

There are several models of Raspberry Pi (<https://www.raspberrypi.org/products/>), and for most people Raspberry Pi 4 Model B is the one to choose. Raspberry Pi 4 Model B is the newest, fastest, and easiest to use.

Raspberry Pi 4 comes with either 1GB, 2GB, or 4GB of RAM. For most educational purposes and many hobbyist projects, 1GB is enough; for use as a desktop computer, we recommend 2GB.



The information contained in this product brochure may change without notice.

For more information, please contact:

sales@jpik.com | www.jpik.com

jp.ik
jp.ik is a brand of JP Sá Couto

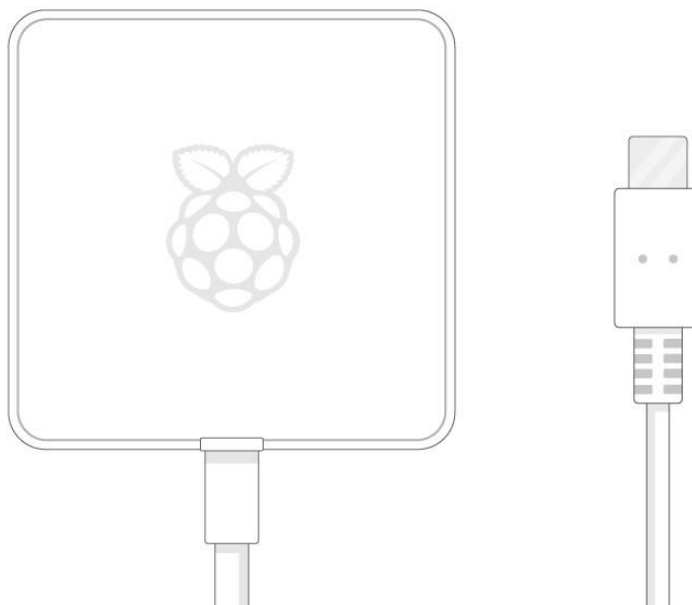
mymaga
mymaga is a brand of JP Sá Couto

Raspberry Pi Zero and Zero W are smaller and require less power, so they're useful for portable projects such as robots. It's generally easier to start a project with Raspberry Pi 4, and to move to Pi Zero when you have a working prototype that a smaller Pi would be useful for.

If you want to buy a Raspberry Pi, head to rpf.io/products (<https://rpf.io/products>).

A power supply

To connect to a power socket, all Raspberry Pi models have a USB port (the same found on many mobile phones): either USB-C for Raspberry Pi 4, or micro-USB for Raspberry Pi 3, 2 and 1.



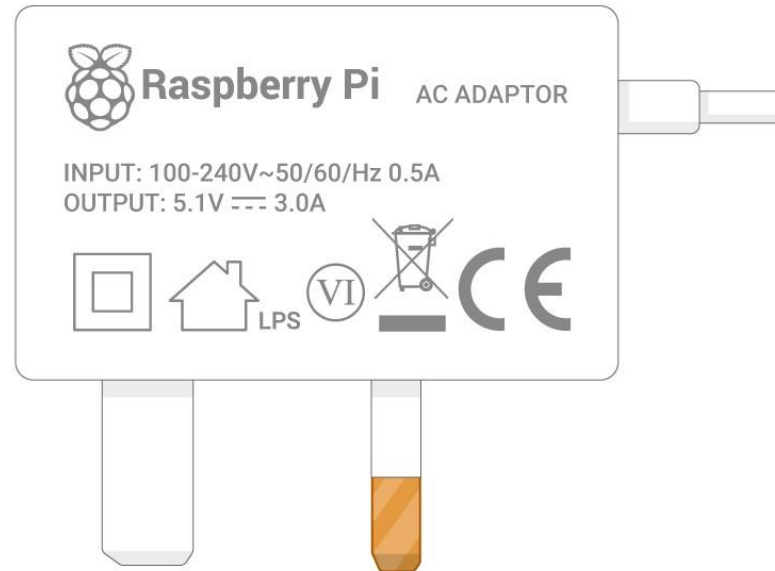
The information contained in this product brochure may change without notice.

For more information, please contact:

sales@jpik.com | www.jpik.com

You need a power supply that provides:

- At least 3.0 amps for Raspberry Pi 4



- At least 2.5 amps for Raspberry Pi 3

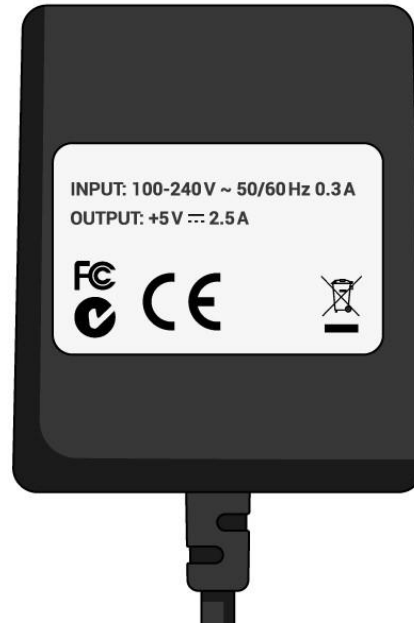
The information contained in this product brochure may change without notice.

For more information, please contact:

sales@jpik.com | www.jpik.com

jp.ik
jp.ik is a brand of JP Sá Couto

 **mymaga**
mymaga is a brand of JP Sá Couto



We recommend using our official Universal Power Supply <https://www.raspberrypi.org/products/raspberry-pi-universal-power-supply/>.

A microSD card

Your Raspberry Pi needs an SD card to store all its files and the Raspbian operating system.

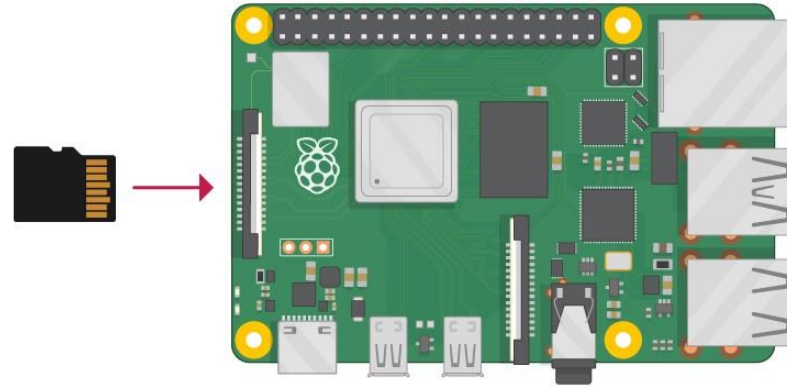
The information contained in this product brochure may change without notice.

For more information, please contact:

sales@jpik.com | www.jpik.com

jp.ik
jp.ik is a brand of JP Sá Couto

 **mymaga**
mymaga is a brand of JP Sá Couto



You need a microSD card with a capacity of at least 8 GB.

Many sellers supply SD cards for Raspberry Pi that are already set up with Raspbian and ready to go.

A keyboard and a mouse

To start using your Raspberry Pi, you need a USB keyboard and a USB mouse.

Once you've set your Pi up, you can use a Bluetooth keyboard and mouse, but you'll need a USB keyboard and mouse for the first setup. A TV or computer screen

To view the Raspbian desktop environment, you need a screen, and a cable to link the screen and the Pi. The screen can be a TV or a computer monitor. If the screen has built-in speakers, the Pi can use these to play sound.

The information contained in this product brochure may change without notice.

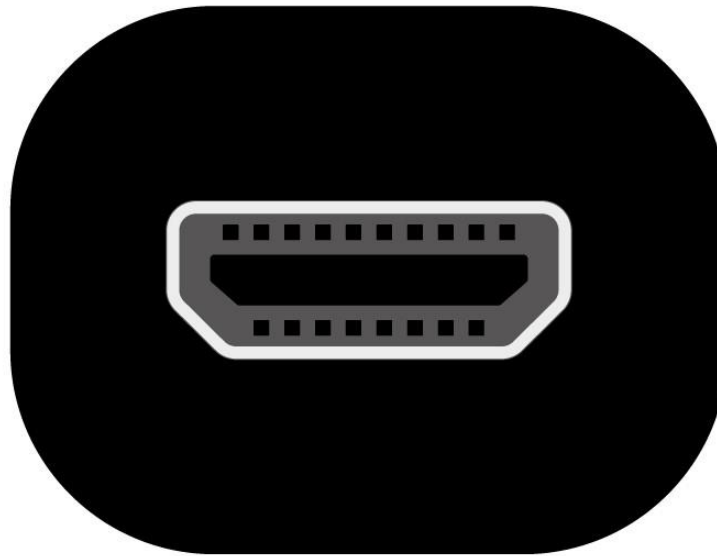
For more information, please contact:

sales@jpik.com | www.jpik.com

HDMI

The Raspberry Pi has a HDMI output port that is compatible with the HDMI port for most modern TVs and computer monitors. Many computer monitors may also have DVI or VGA ports.

Raspberry Pi 4 has two micro-HDMI ports, allowing you to connect two separate monitors.



You need either a micro-HDMI-to-HDMI cable, or a standard HDMI-to-HDMI cable plus a micro-HDMI-to HDMI adapter, to connect Raspberry Pi 4 to a screen.

The information contained in this product brochure may change without notice.

For more information, please contact:

sales@jpik.com | www.jpik.com

jp.ik
jp.ik is a brand of JP Sá Couto


mymaga is a brand of JP Sá Couto



Raspberry Pi 1, 2 and 3 have a single full-size HDMI port, so you can connect them to a screen using a standard HDMI-to-HDMI cable.

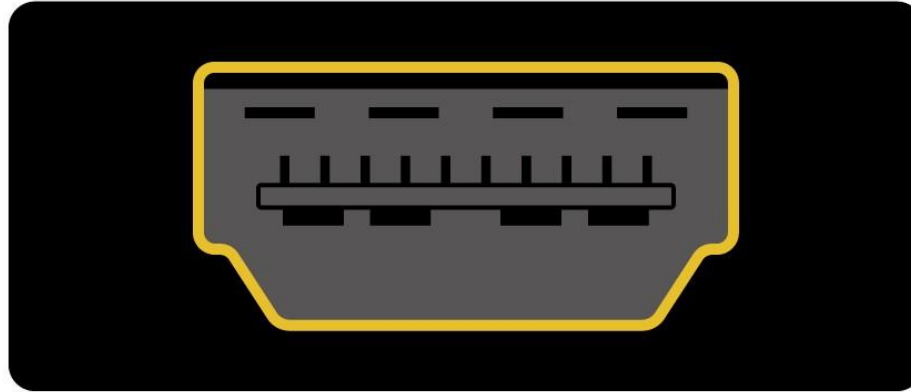
The information contained in this product brochure may change without notice.

For more information, please contact:

sales@jpik.com | www.jpik.com

jp.ik
jp.ik is a brand of JP Sá Couto

 **mymaga**
mymaga is a brand of JP Sá Couto



DVI

If your screen has a DVI port, you can connect the Pi to it using an HDMI-to-DVI cable.

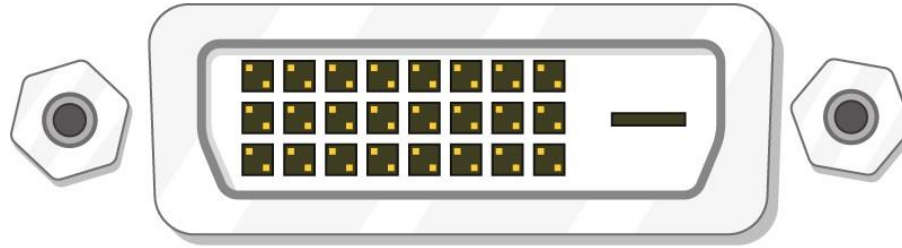
The information contained in this product brochure may change without notice.

For more information, please contact:

sales@jpik.com | www.jpik.com

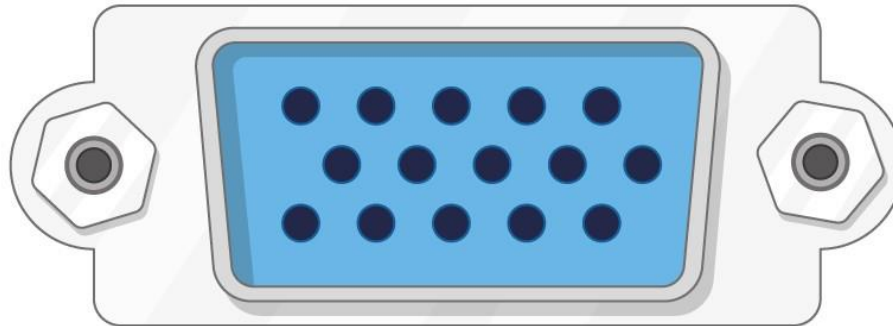
jp.ik
jp.ik is a brand of JP Sá Couto

 **mymaga**
mymaga is a brand of JP Sá Couto



VGA

Some screens only have a VGA port.



To connect your Pi to such a screen, you can use an HDMI-to-VGA adapter.

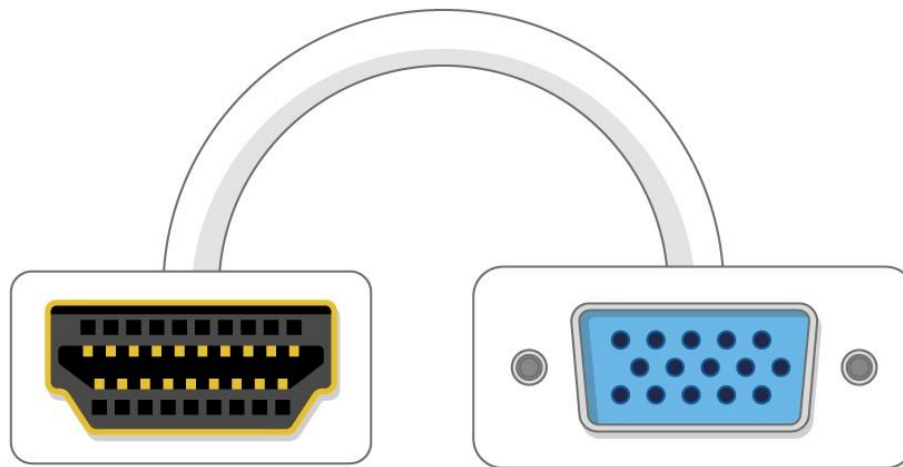
The information contained in this product brochure may change without notice.

For more information, please contact:

sales@jpik.com | www.jpik.com

jp.ik
jp.ik is a brand of JP Sá Couto

mymaga
mymaga is a brand of JP Sá Couto



Optional extras

A case

You may want to put your Raspberry Pi in a case. This is not essential, but it will provide protection for your Raspberry Pi. If you'd like, you can use the official case for Raspberry Pi 4 (<https://www.raspberrypi.org/products/raspberry-pi-4-case/>) or Pi Zero or Zero W (<https://www.raspberrypi.org/products/raspberry-pi-zero-case/>).

Headphones or speakers

The large Raspberry Pi models (but not Pi Zero/Zero W) have a standard audio port like the one on your smart phone or MP3 player. If you want to, you can connect your headphones or speakers so that your Raspberry Pi can play sound. If the screen you're connecting your Raspberry Pi to has built-in speakers, Raspberry Pi can play sound through these.

The information contained in this product brochure may change without notice.

For more information, please contact:

sales@jpik.com | www.jpik.com

jp.ik
jp.ik is a brand of JP Sá Couto

mymaga
mymaga is a brand of JP Sá Couto

An Ethernet cable

The large Raspberry Pi models (but not Pi Zero/Zero W) have a standard Ethernet port to connect them to the internet; to connect Pi Zero to the internet, you need a USB-to-Ethernet adaptor.

Raspberry Pi 4, 3, and Pi Zero W can also be wirelessly connected to the internet.

The information contained in this product brochure may change without notice.

For more information, please contact:

sales@jpik.com | www.jpik.com

jp.ik
jp.ik is a brand of JP Sá Couto

 **mymaga**
mymaga is a brand of JP Sá Couto

If you have an SD card that doesn't have the Raspbian operating system on it yet, or if you want to reset your Raspberry Pi, you can easily install Raspbian yourself. To do so, you need a computer that has an SD card port — most laptop and desktop computers have one.

The Raspbian operating system via NOOBS

Using the NOOBS software is the easiest way to install Raspbian on your SD card.

Note: more advanced users looking to install a particular operating system should use this guide to installing operating system images (<https://www.raspberrypi.org/documentation/installation/installing-images/README.md>).

The information contained in this product brochure may change without notice.

For more information, please contact:

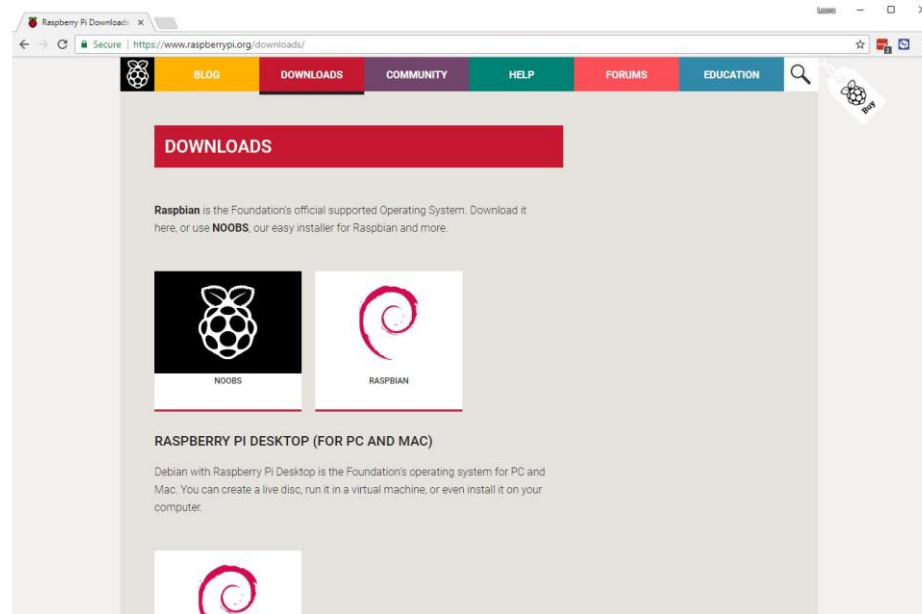
sales@jpik.com | www.jpik.com

jp.ik
jp.ik is a brand of JP Sá Couto

 **mymaga**
mymaga is a brand of JP Sá Couto

Download NOOBS

- Visit the Raspberry Pi downloads page (<https://www.raspberrypi.org/downloads>).



The information contained in this product brochure may change without notice.

For more information, please contact:

sales@jpik.com | www.jpik.com

jp.ik
jp.ik is a brand of JP Sá Couto

 **mymaga**
mymaga is a brand of JP Sá Couto

- You should see a box linking to the NOOBS les. Click on the box.



- The simplest option is to download the zip archive of the les. Make sure to pay attention to where you save the archive, so that you can and it again quickly.

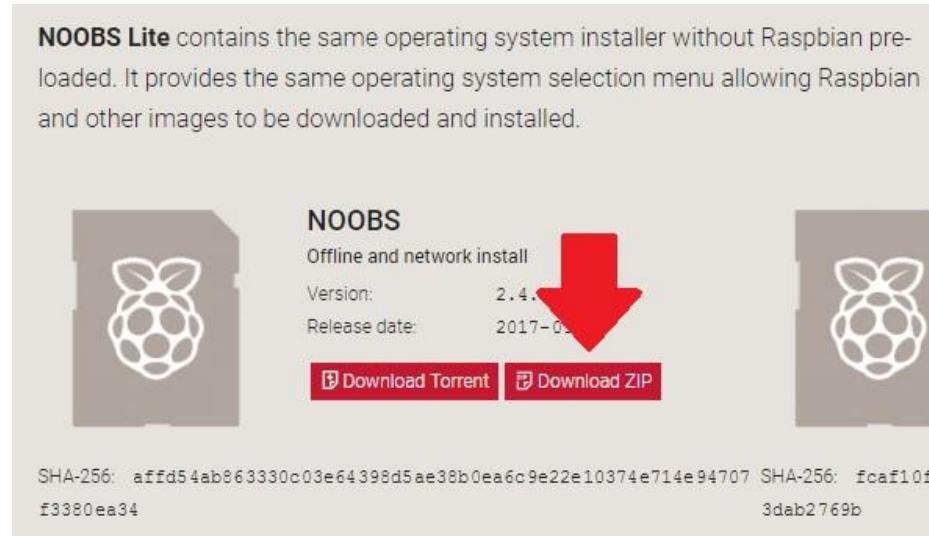
The information contained in this product brochure may change without notice.

For more information, please contact:

sales@jpik.com | www.jpik.com

jp.ik
jp.ik is a brand of JP Sá Couto

 **mymaga**
mymaga is a brand of JP Sá Couto



Format the SD card

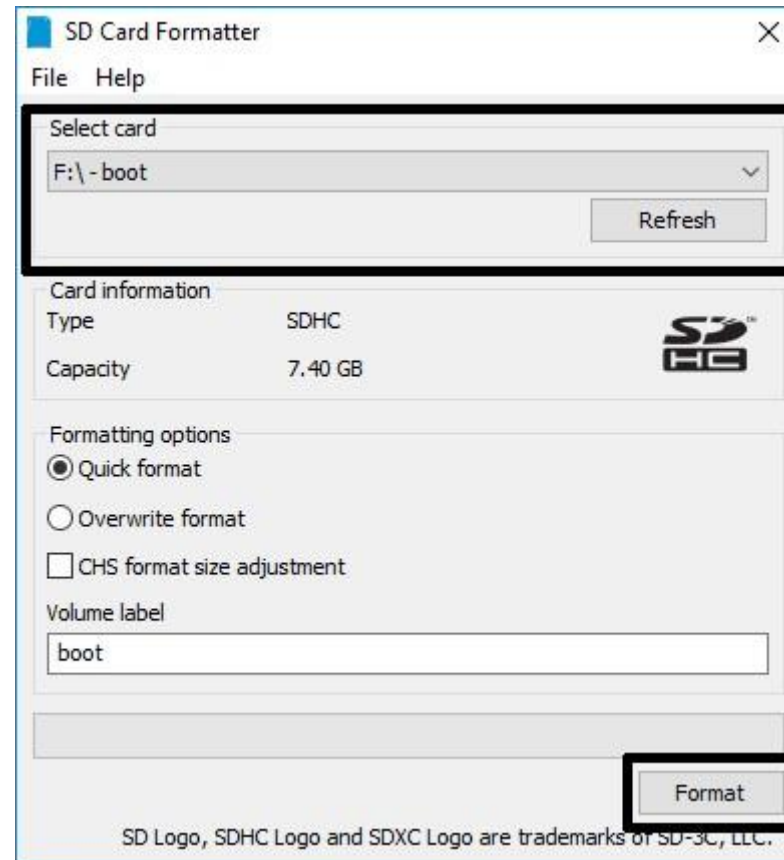
Anything that's stored on the SD card will be overwritten during formatting. So, if the SD card on which you want to install Raspbian currently has any files on it, e.g. from an older version of Raspbian, you may wish to back these files up first to not lose them permanently.

- Visit the SD Association's website and download SD Formatter (https://www.sdcard.org/downloads/formatter_4/index.html) for Windows or Mac.
- Follow the instructions to install the software.
- Insert your SD card into the computer or laptop's SD card slot.
- In SD Formatter, select your SD card, and then format the card.

The information contained in this product brochure may change without notice.

For more information, please contact:

sales@jpik.com | www.jpik.com



The information contained in this product brochure may change without notice.

For more information, please contact:

sales@jpik.com | www.jpik.com

jp.ik
jp.ik is a brand of JP Sá Couto

mymaga
mymaga is a brand of JP Sá Couto



Extract NOOBS from the zip archive

Next, you will need to extract the les from the NOOBS zip archive you downloaded from the Raspberry Pi website.

The information contained in this product brochure may change without notice.

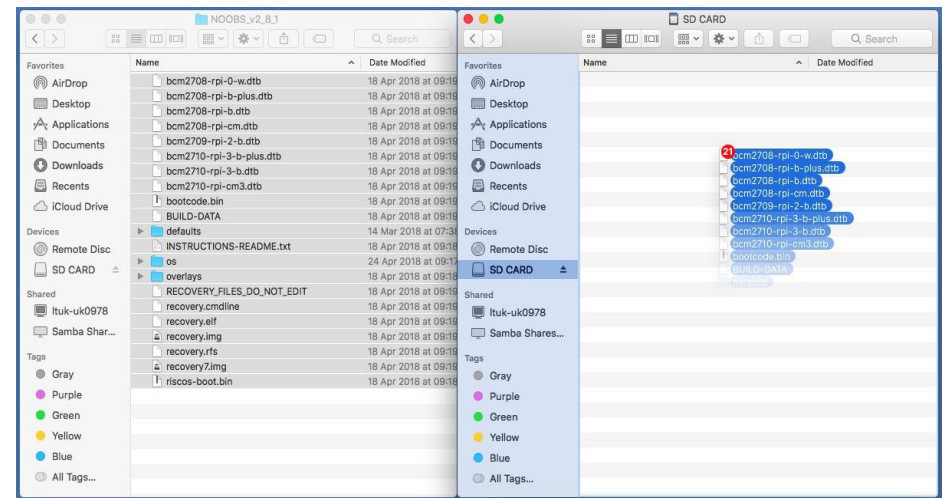
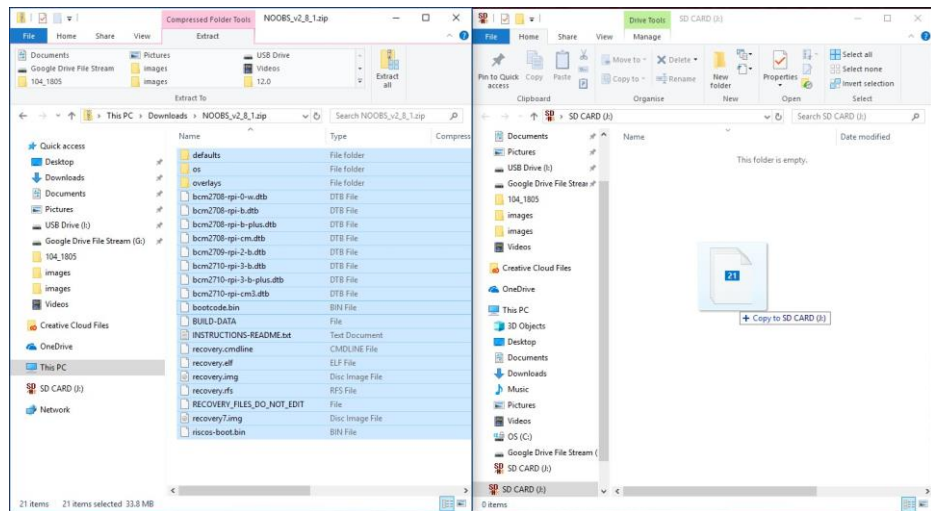
For more information, please contact:

sales@jpik.com | www.jpik.com

jp.ik
jp.ik is a brand of JP Sá Couto

 **mymaga**
mymaga is a brand of JP Sá Couto

- Find the downloaded archive — by default, it should be in your Downloads folder.
- Double-click on it to extract the less and keep the resulting Explorer/Finder window open. Copy the les
- Now open another Explorer/Finder window and navigate to the SD card. It's best to position the two windows side by side.
- Select all the les in the NOOBS folder and drag them into the SD card window to copy them to the card.



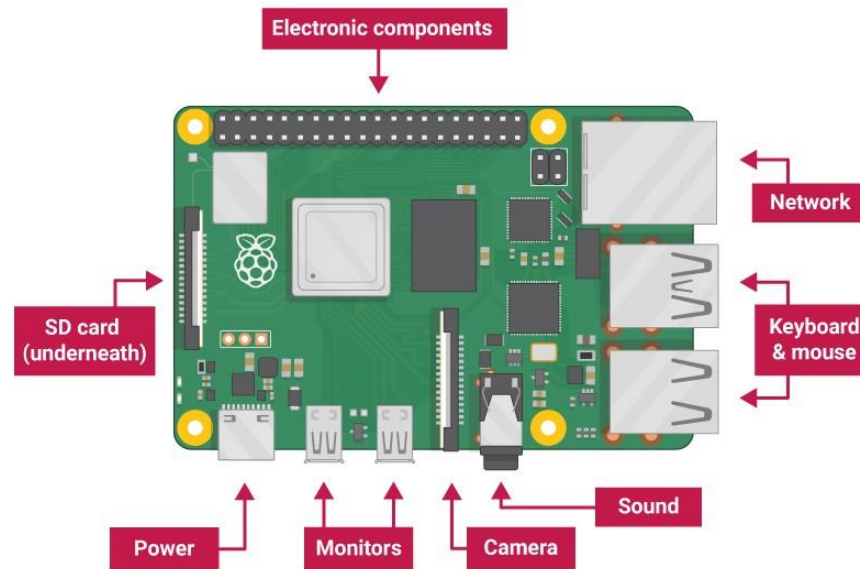
- Once the files have all been copied over, you can eject the SD card.

The information contained in this product brochure may change without notice.

For more information, please contact:

sales@jpik.com | www.jpik.com

Now everything connected to your Raspberry Pi. It's important to do this in the right order, so that all your components are safe.



- Insert the SD card you've set up with Raspbian (via NOOBS) into the microSD card slot on the underside of your Raspberry Pi.

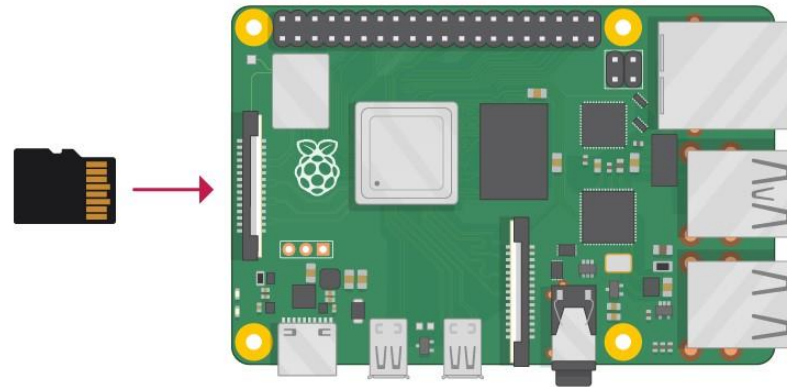
The information contained in this product brochure may change without notice.

For more information, please contact:

sales@jpik.com | www.jpik.com

jp.ik
jp.ik is a brand of JP Sá Couto

mymaga
mymaga is a brand of JP Sá Couto



Note: Many microSD cards come inside a larger adapter — you can slide the smaller card out using the lip at the bottom.



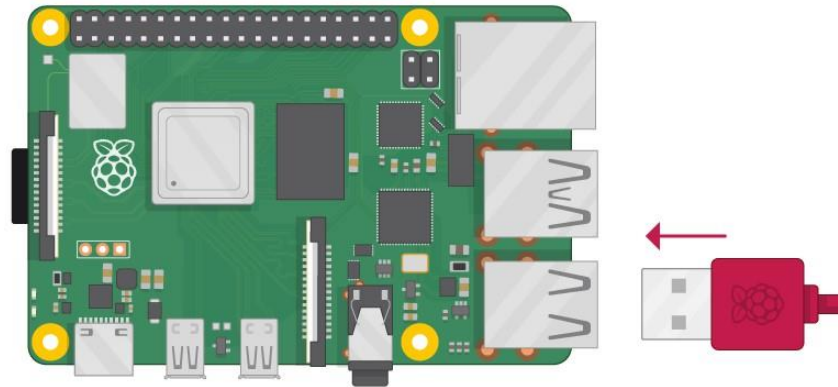
The information contained in this product brochure may change without notice.

For more information, please contact:
sales@jpik.com | www.jpik.com

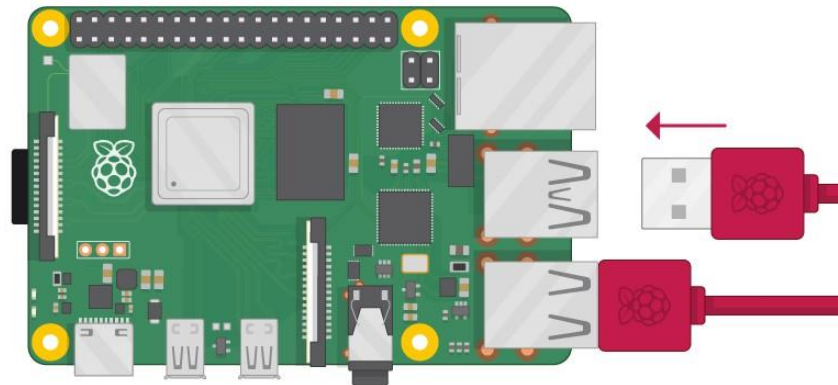
jp.ik
jp.ik is a brand of JP Sá Couto

mymaga
mymaga is a brand of JP Sá Couto

- Find the USB connector end of your mouse's cable and connect the mouse to a USB port on Raspberry Pi (it doesn't matter which port you use).



- Connect the keyboard in the same way.



The information contained in this product brochure may change without notice.

For more information, please contact:

sales@jpik.com | www.jpik.com

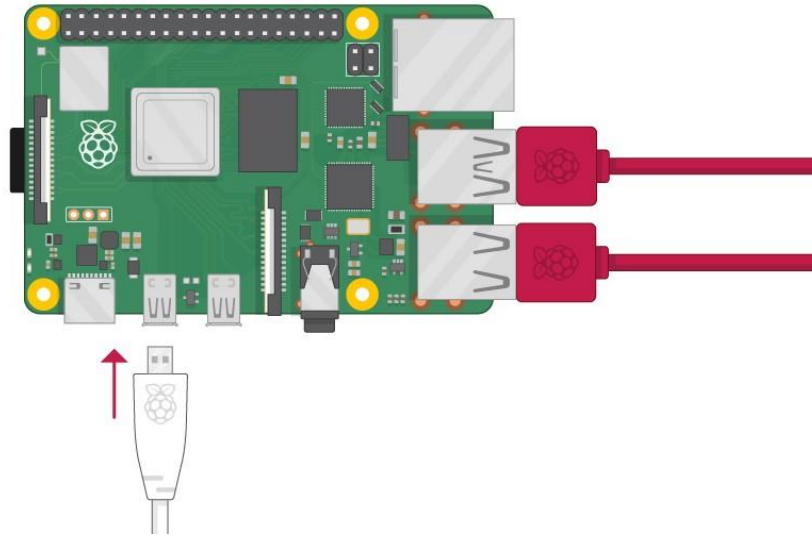
jp.ik
jp.ik is a brand of JP Sá Couto

mymaga
mymaga is a brand of JP Sá Couto

- Make sure your screen is plugged into a wall socket and switched on.
- Look at the HDMI port(s) on the Raspberry Pi — notice that they have a at side on top.
- Use a cable to connect the screen to Raspberry Pi's HDMI port — use an adapter if necessary.

Raspberry Pi 4

Connect your screen to the first of Raspberry Pi 4's HDMI ports, labelled HDMI0.



You can connect an optional second screen in the same way.

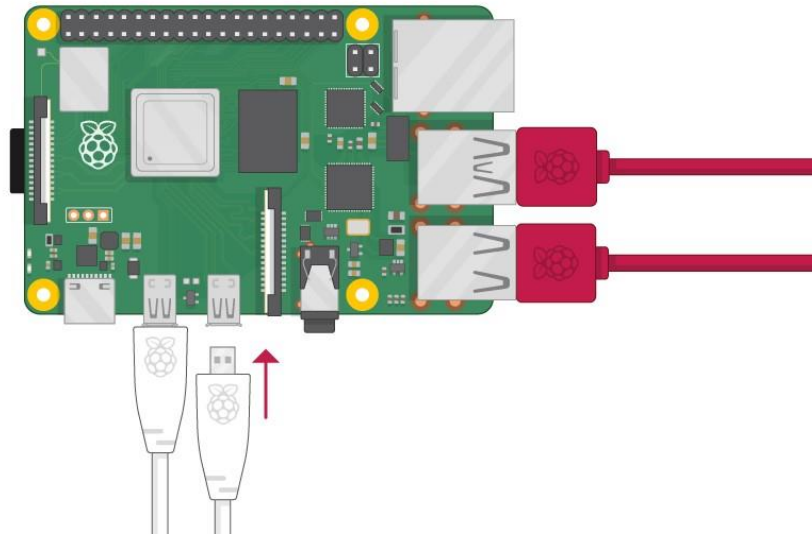
The information contained in this product brochure may change without notice.

For more information, please contact:

sales@jpik.com | www.jpik.com

jp.ik
jp.ik is a brand of JP Sá Couto

mymaga
mymaga is a brand of JP Sá Couto



Raspberry Pi 1, 2, 3

Connect your screen to the single HDMI port.

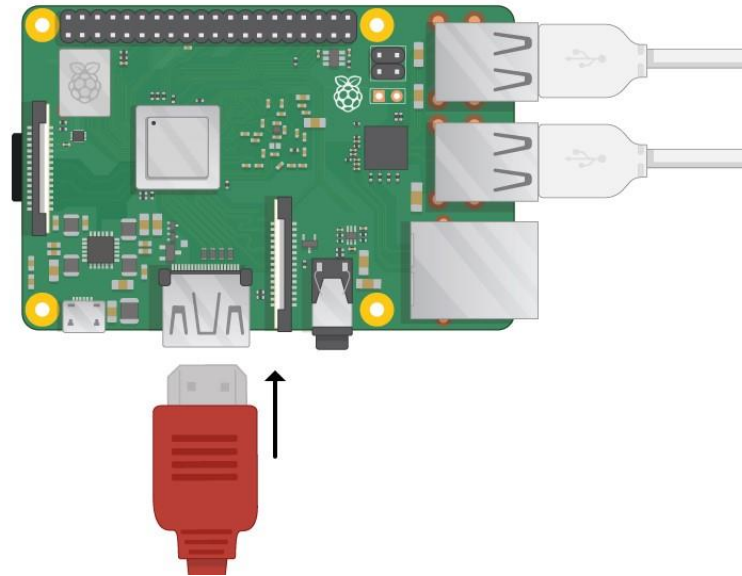
The information contained in this product brochure may change without notice.

For more information, please contact:

sales@jpik.com | www.jpik.com

jp.ik
jp.ik is a brand of JP Sá Couto

 **mymaga**
mymaga is a brand of JP Sá Couto



Note: nothing will be displayed on the screen, because your Raspberry Pi is not running yet.

- If you want to connect your Raspberry Pi to the internet via Ethernet, use an Ethernet cable to connect the Ethernet port on Raspberry Pi to an Ethernet socket on the wall or on your internet router. You don't need to do this if you want to use wireless connectivity, or if you don't want to connect to the internet.

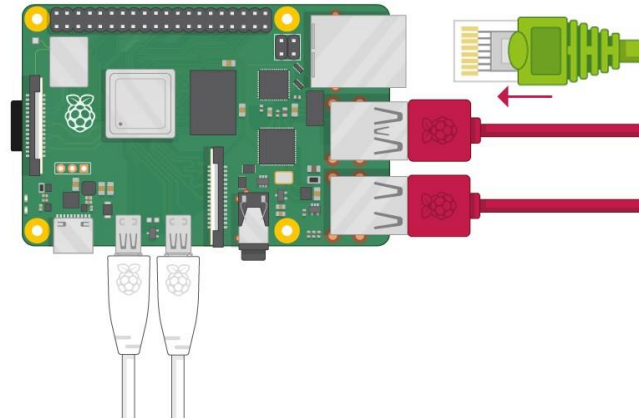
The information contained in this product brochure may change without notice.

For more information, please contact:

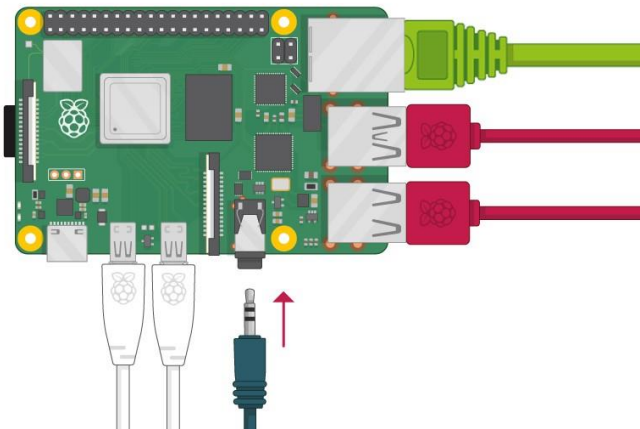
sales@jpik.com | www.jpik.com

jp.ik
jp.ik is a brand of JP Sá Couto

mymaga
mymaga is a brand of JP Sá Couto



- If the screen you are using has speakers, sound will play through those. Alternatively, connect headphones or speakers to the audio port if you prefer.



The information contained in this product brochure may change without notice.

For more information, please contact:

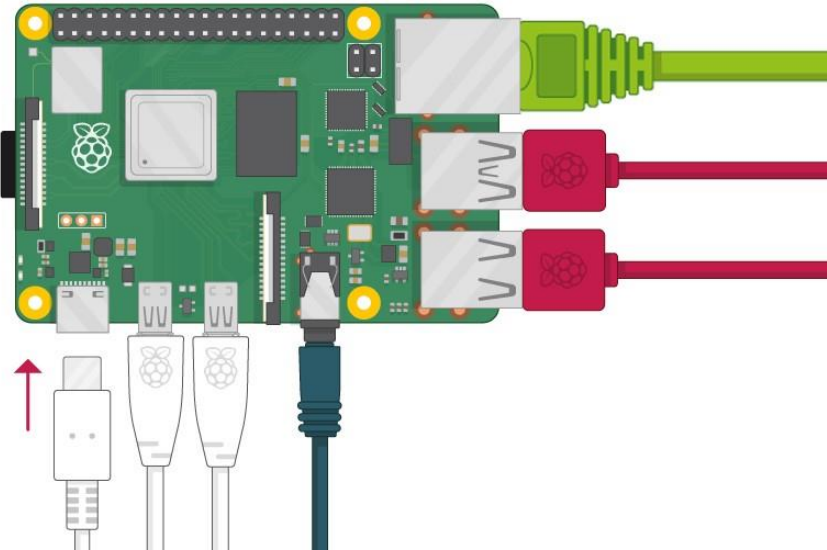
sales@jpik.com | www.jpik.com

jp.ik
jp.ik is a brand of JP Sá Couto

mymaga
mymaga is a brand of JP Sá Couto

Your Raspberry Pi doesn't have a power switch: as soon as you connect it to a power outlet, it will turn on.

- Plug the USB power supply into a socket and connect it to your Raspberry Pi's power port.



You should see a red LED light up on the Raspberry Pi, which indicates that Raspberry Pi is connected to power. As it starts up (this is also called booting), you will see raspberries appear in the top left-hand corner of your screen.

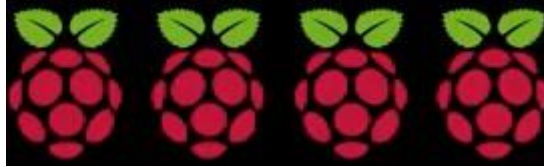
The information contained in this product brochure may change without notice.

For more information, please contact:

sales@jpik.com | www.jpik.com

jp.ik
jp.ik is a brand of JP Sá Couto

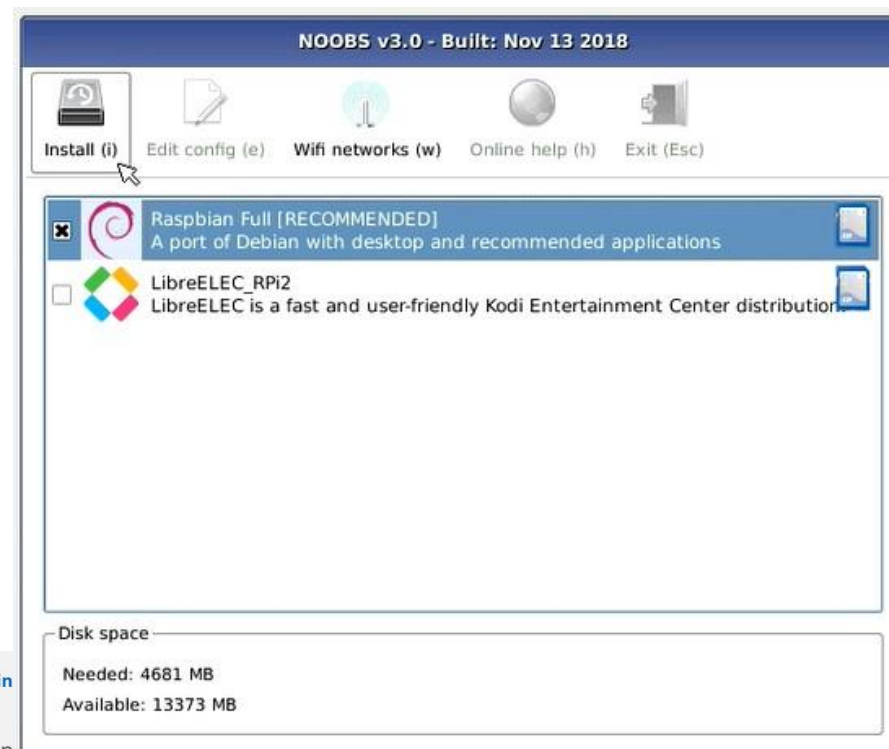
mymaga
mymaga is a brand of JP Sá Couto



First-time startup with NOOBS

If this is the first time you're starting your Raspberry Pi with an SD card containing NOOBS, you will see the NOOBS installer. This software will walk you through installing the Raspbian operating system (OS).

- When the installer has loaded, it will offer you a choice of which OS to install. Check the box for Raspbian, and then click Install.



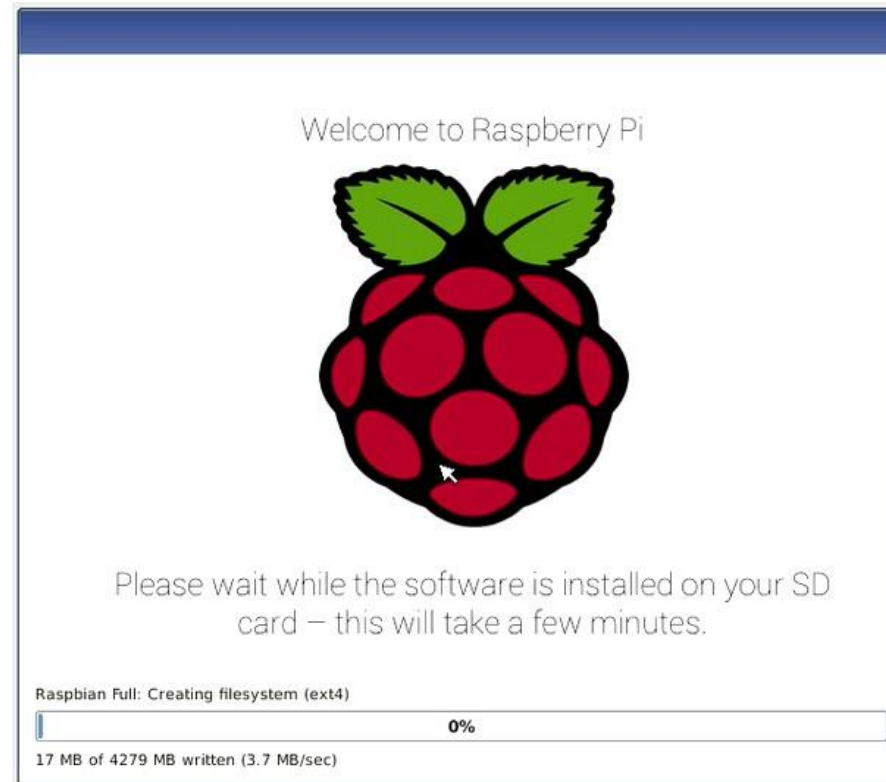
The information contained in

For more information, p

sales@jpik.com | www.jpik.com

Click Yes in the warning dialogue box, and then sit back and relax. The Raspbian installation process will take a bit of time.

When Raspbian has been installed, click OK. Your Raspberry Pi will restart, and Raspbian will then boot up.



The information contained in this product brochure may change without notice.

For more information, please contact:

sales@jpik.com | www.jpik.com

jp.ik
jp.ik is a brand of JP Sá Couto

mymaga
mymaga is a brand of JP Sá Couto



After a few seconds the Raspbian Desktop will appear.



The information contained in this product brochure may change without notice.

For more information, please contact:
sales@jpik.com | www.jpik.com

jp.ik
jp.ik is a brand of JP Sá Couto

 **mymaga**
mymaga is a brand of JP Sá Couto

When you start your Raspberry Pi for the first time, the Welcome to Raspberry Pi application will pop up and guide you through the initial setup.



- Click Next to start the setup.
- Set your Country, Language, and Timezone, then click Next again.

The information contained in this product brochure may change without notice.

For more information, please contact:

sales@jpik.com | www.jpik.com

jp.ik
jp.ik is a brand of JP Sá Couto

mymaga
mymaga is a brand of JP Sá Couto

Welcome to Raspberry Pi

Set Country

Enter the details of your location. This is used to set the language, time zone, keyboard and other international settings.

Country: United Kingdom

Language: British English

Timezone: London

☐ Use English language ☐ Use US keyboard

Press 'Next' when you have made your selection.

Back Next

- Enter a new password for your Raspberry Pi and click Next.

The information contained in this product brochure may change without notice.

For more information, please contact:

sales@jpik.com | www.jpik.com

jp.ik
jp.ik is a brand of JP Sá Couto

 **mymaga**
mymaga is a brand of JP Sá Couto

Welcome to Raspberry Pi

Change Password

The default 'pi' user account currently has the password 'raspberrypi'. It is strongly recommended that you change this to a different password that only you know.

Enter new password:

Confirm new password:

☒ Hide characters

Press 'Next' to activate your new password.

- Connect to your WiFi network by selecting its name, entering the password, and clicking Next.

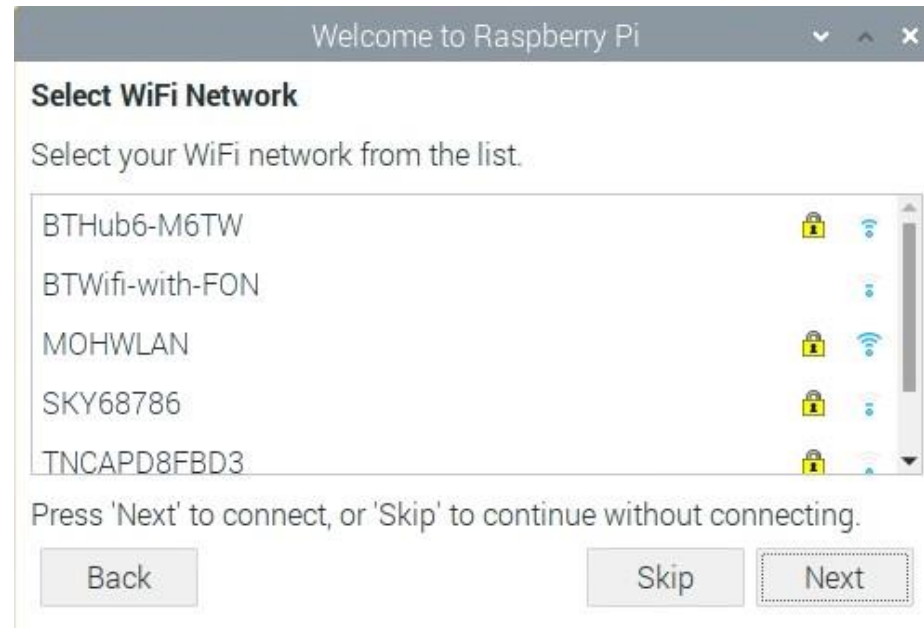
The information contained in this product brochure may change without notice.

For more information, please contact:

sales@jpik.com | www.jpik.com

jp.ik
jp.ik is a brand of JP Sá Couto

 **mymaga**
mymaga is a brand of JP Sá Couto



Note: if your Raspberry Pi model doesn't have wireless connectivity, you won't see this screen.

- Click Next let the wizard check for updates to Raspbian and install them (this might take a little while).

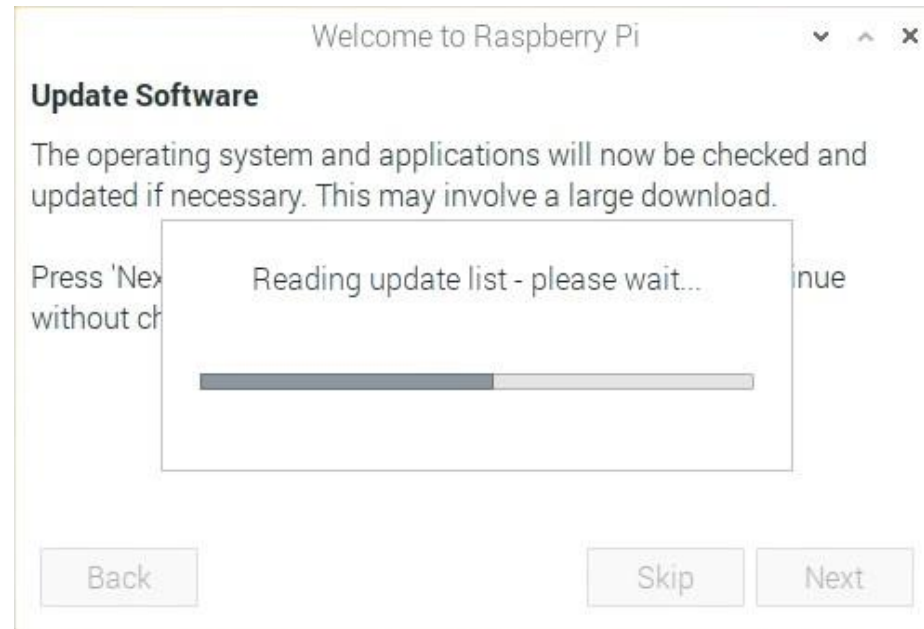
The information contained in this product brochure may change without notice.

For more information, please contact:

sales@jpik.com | www.jpik.com

jp.ik
jp.ik is a brand of JP Sá Couto

mymaga
mymaga is a brand of JP Sá Couto



- Click Done or Reboot to finish the setup.

Note: you will only need to reboot if that's necessary to complete an update.

The information contained in this product brochure may change without notice.

For more information, please contact:

sales@jpik.com | www.jpik.com

jp.ik
jp.ik is a brand of JP Sá Couto

 **mymaga**
mymaga is a brand of JP Sá Couto



The information contained in this product brochure may change without notice.

For more information, please contact:

sales@jpik.com | www.jpik.com

jp.ik
jp.ik is a brand of JP Sá Couto

 **mymaga**
mymaga is a brand of JP Sá Couto

If you're having problems with your Raspberry Pi, there are lots of places you can get help and advice:

- Check out the help section (<https://www.raspberrypi.org/help/>) and the troubleshooting guide (<https://www.raspberrypi.org/learning/troubleshooting-guide/>) on the Raspberry Pi website
- The Raspberry Pi forum (<https://www.raspberrypi.org/forums>), including the Beginners (<https://www.raspberrypi.org/forums/viewforum.php?f=91>) section, is a great place to ask questions and get support from the Raspberry Pi community
- Call out on Twitter (<https://twitter.com>) using the hashtag #rpilearn, or submit a question on the Raspberry Pi Stack Exchange (<https://raspberrypi.stackexchange.com/>)
- You could also attend a free Raspberry Jam (<https://rpf.io/jam>) community event to talk to people about their experiences and get some first-hand help from fellow Raspberry Pi users

The information contained in this product brochure may change without notice.

For more information, please contact:

sales@jpik.com | www.jpik.com

jp.ik
jp.ik is a brand of JP Sá Couto

 mymaga
mymaga is a brand of JP Sá Couto

- Take a look at our Using your Raspberry Pi (<https://projects.raspberrypi.org/en/projects/raspberry-pi-using>) guide.
- Explore what you can do with your Raspberry Pi by creating some of our digital making projects (<https://projects.raspberrypi.org>), for example:
 - Robot antenna (<https://projects.raspberrypi.org/en/projects/robot-antenna>) — control a robot's antenna light with Raspberry Pi and code blocks
 - Rock band (<https://projects.raspberrypi.org/en/projects/rock-band>) — learn how to code your own musical instruments
 - Turtle race (<https://projects.raspberrypi.org/en/projects/turtle-race>) — race digital turtles against each other
 - Push button stop-motion (<https://projects.raspberrypi.org/en/projects/push-button-stopmotion>) — make your own stop-motion animation rig with a button and a Raspberry Pi Camera Module (<https://www.raspberrypi.org/products/camera-module-v2/>)

Published by Raspberry Pi Foundation (<https://www.raspberrypi.org>) under a Creative Commons license (<https://creativecommons.org/licenses/by-sa/4.0/>).

View project & license on GitHub (<https://github.com/RaspberryPiLearning/raspberry-pi-setting-up>)

The information contained in this product brochure may change without notice.

For more information, please contact:

sales@jpik.com | www.jpik.com

jp.ik
jp.ik is a brand of JP Sá Couto

mymaga
mymaga is a brand of JP Sá Couto