

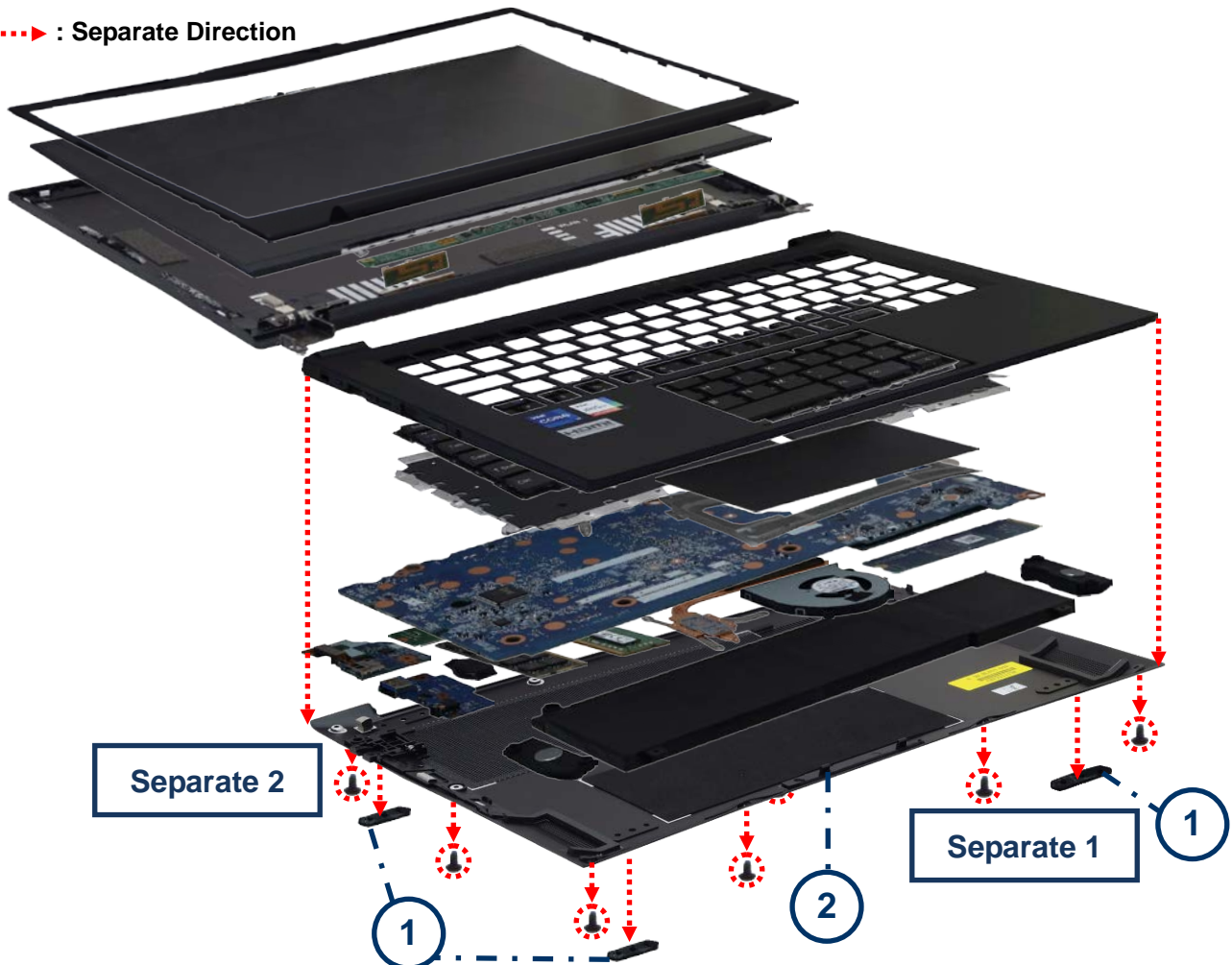
## 1. Dismantling Process and Special Handling Needs

Items marked in Red (noted as Annex VII part) are substances, preparations, or components with special handling needs, due to the toxicity potential of elements contained therein.

○ : General Part

◻ : Annex VII Part

...▶ : Separate Direction



**Separate 1: Pry (Glued Joint x 4) to take out the part 1.**



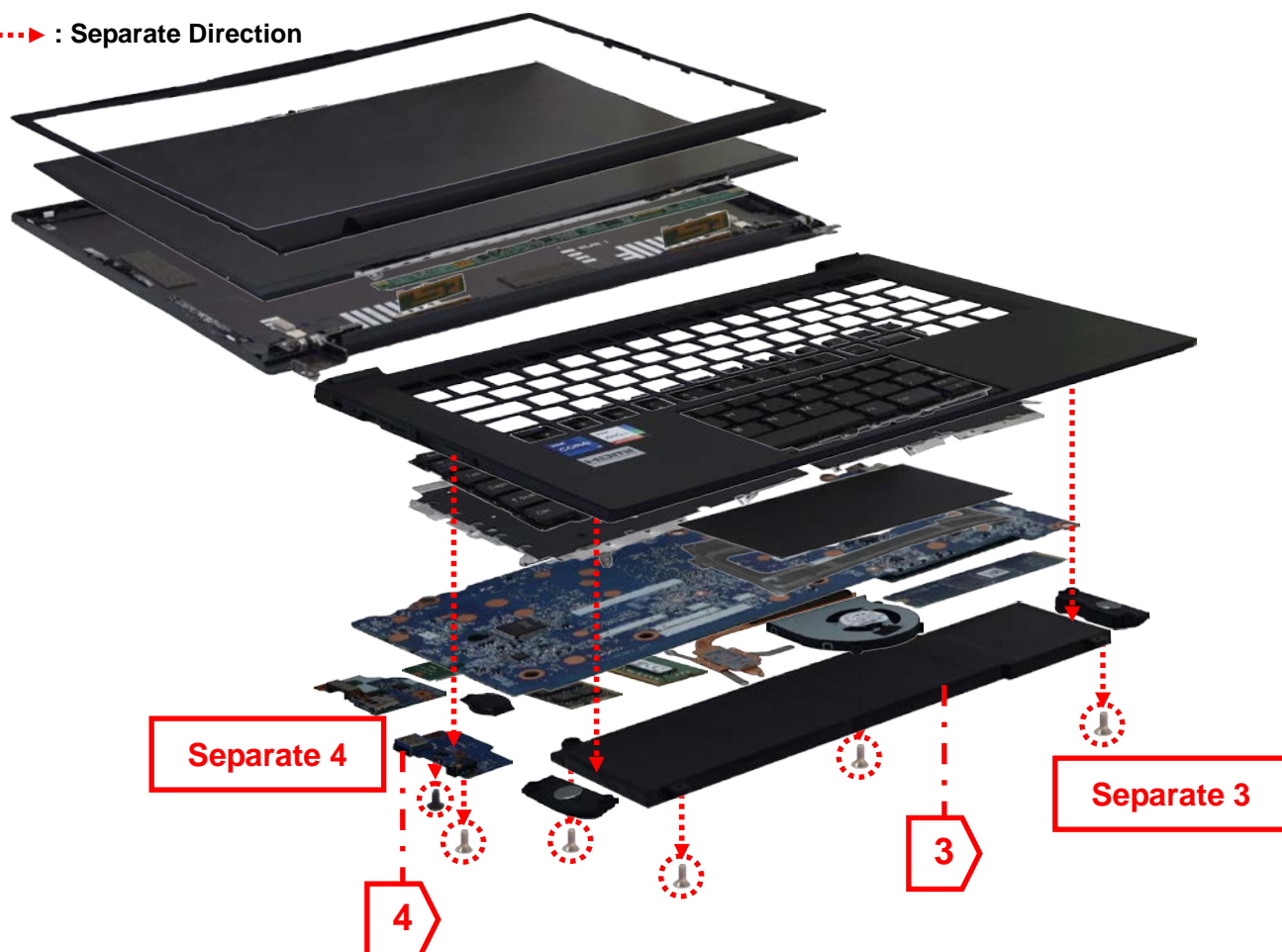
**Separate 2: Unscrew (Cross x 11) all joints to take out the part 2.**



○ : General Part

⬡ : Annex VII Part

⋯▶ : Separate Direction



**Separate 3: Unscrew (Cross × 4) all joints to take out the part 3.**



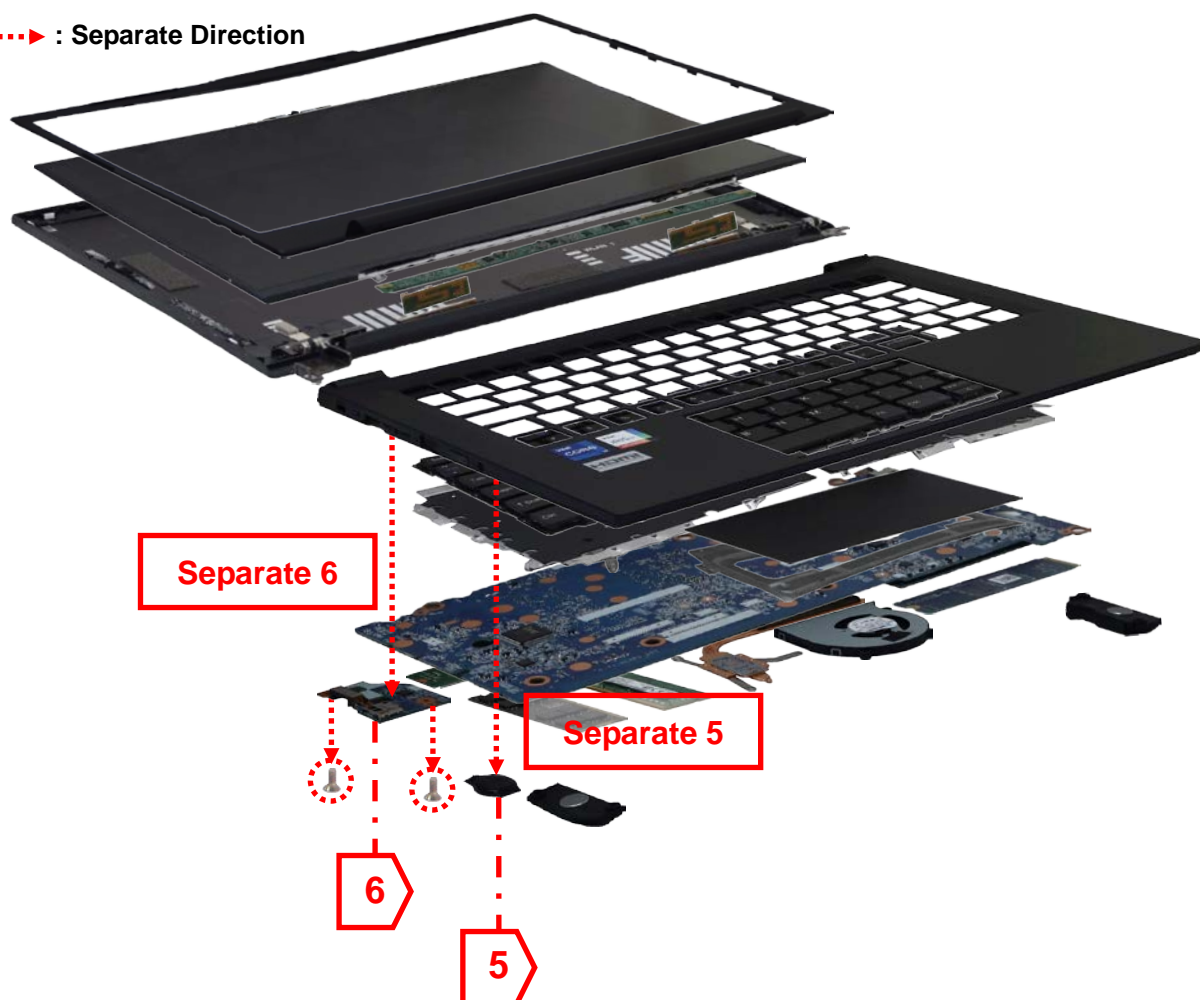
**Separate 4: Unscrew (Cross × 2) all joints to take out the part 4.**



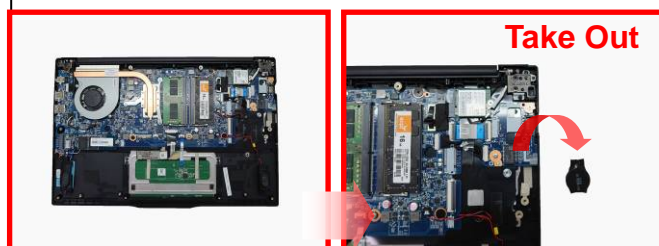
○ : General Part

⬡ : Annex VII Part

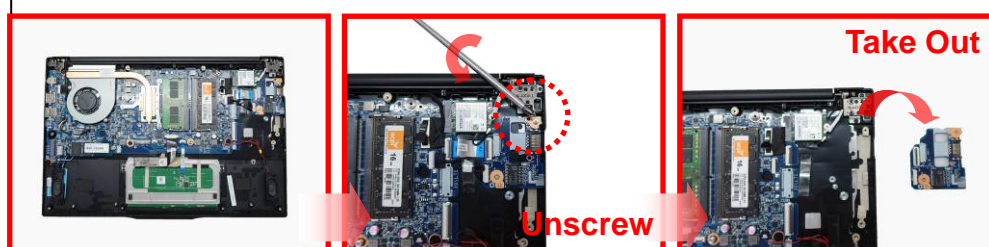
⋯▶ : Separate Direction



Separate 5: Take out (Put Together x 1) the part 5.



Separate 6: Unscrew (Cross x 2) all joints to take out the part 6.

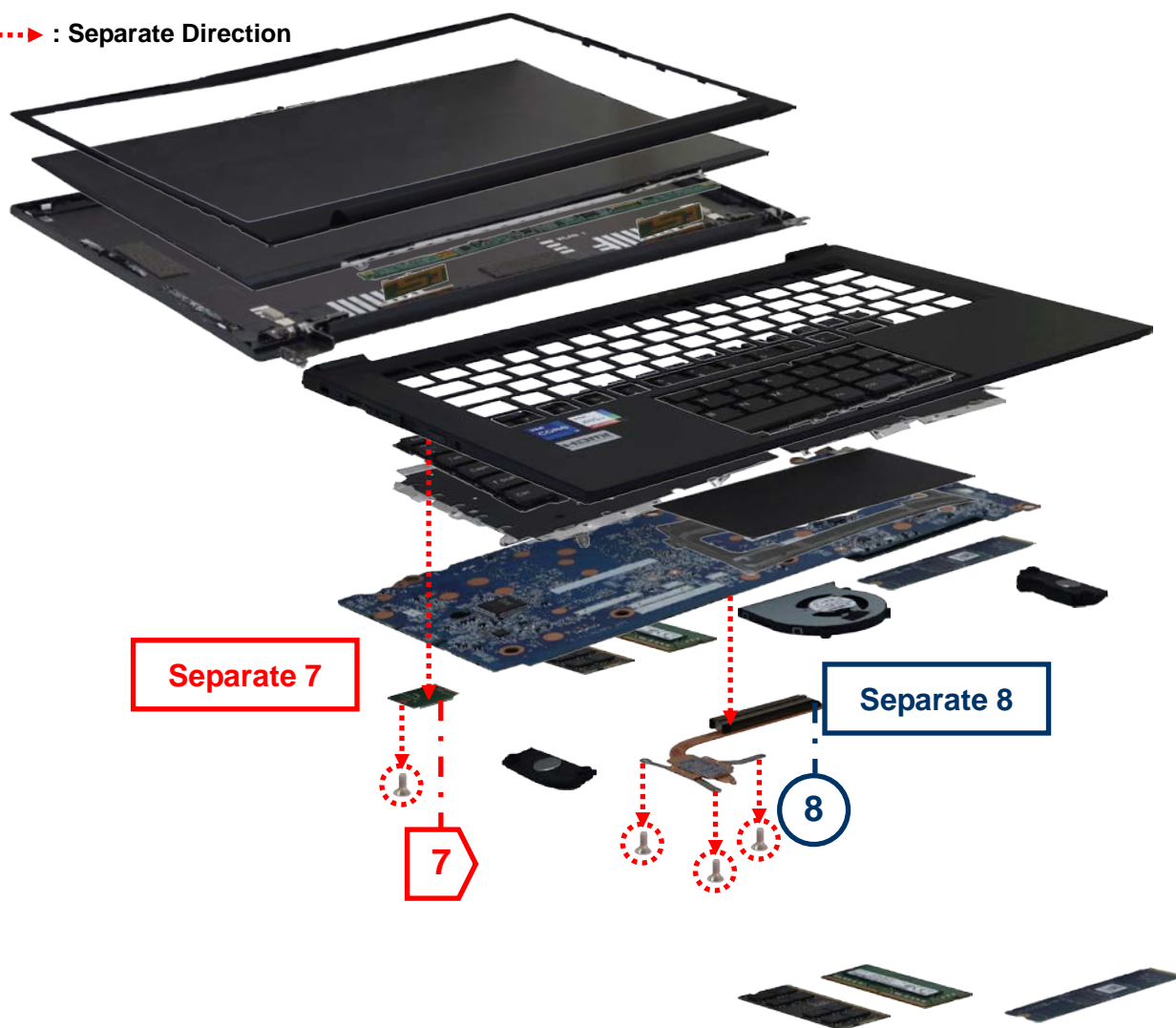




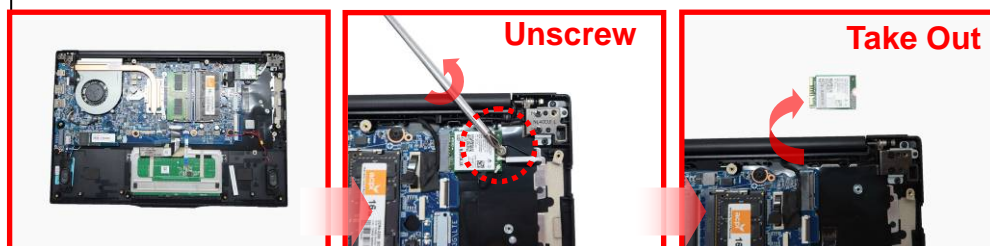
○ : General Part

⬡ : Annex VII Part

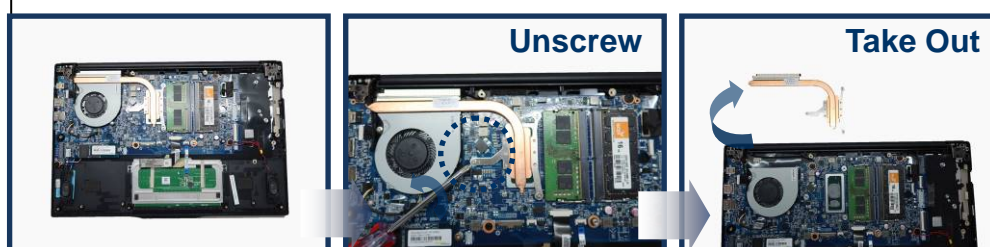
⋯▶ : Separate Direction



**Separate 7: Unscrew (Cross × 1) the joint to take out the part 7.**



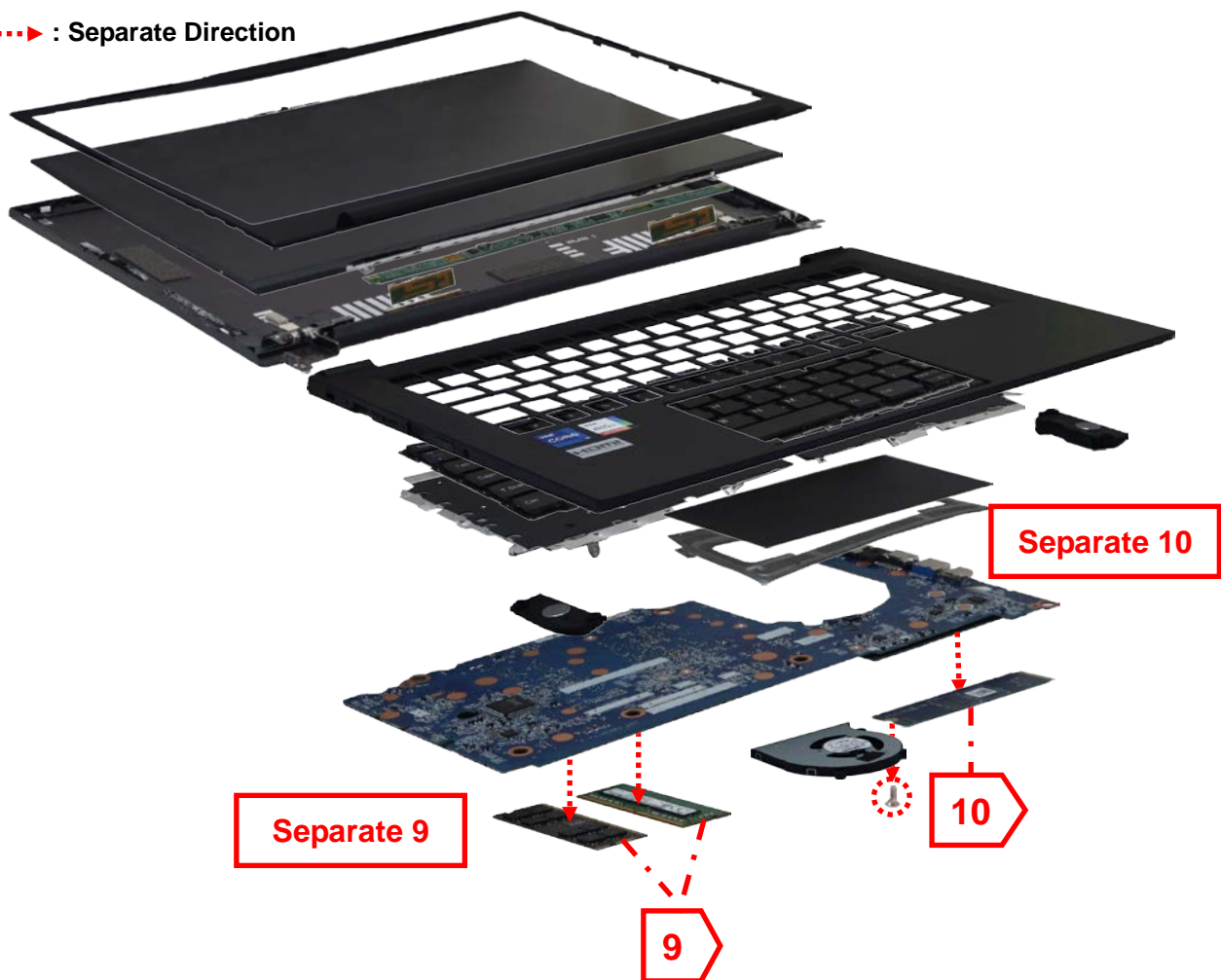
**Separate 8: Unscrew (Cross × 3) all joints to take out the part 8.**



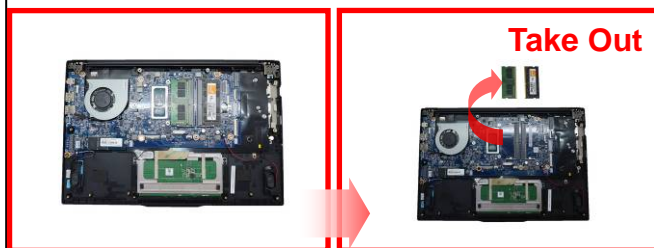
○ : General Part

⬡ : Annex VII Part

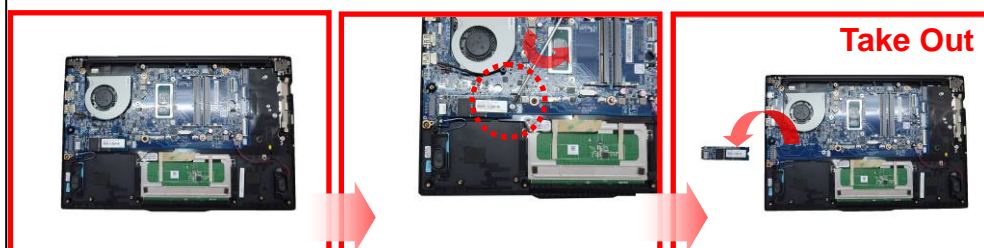
...▶ : Separate Direction



**Separate 9: Take out (Snap Fit × 4) the part 9.**



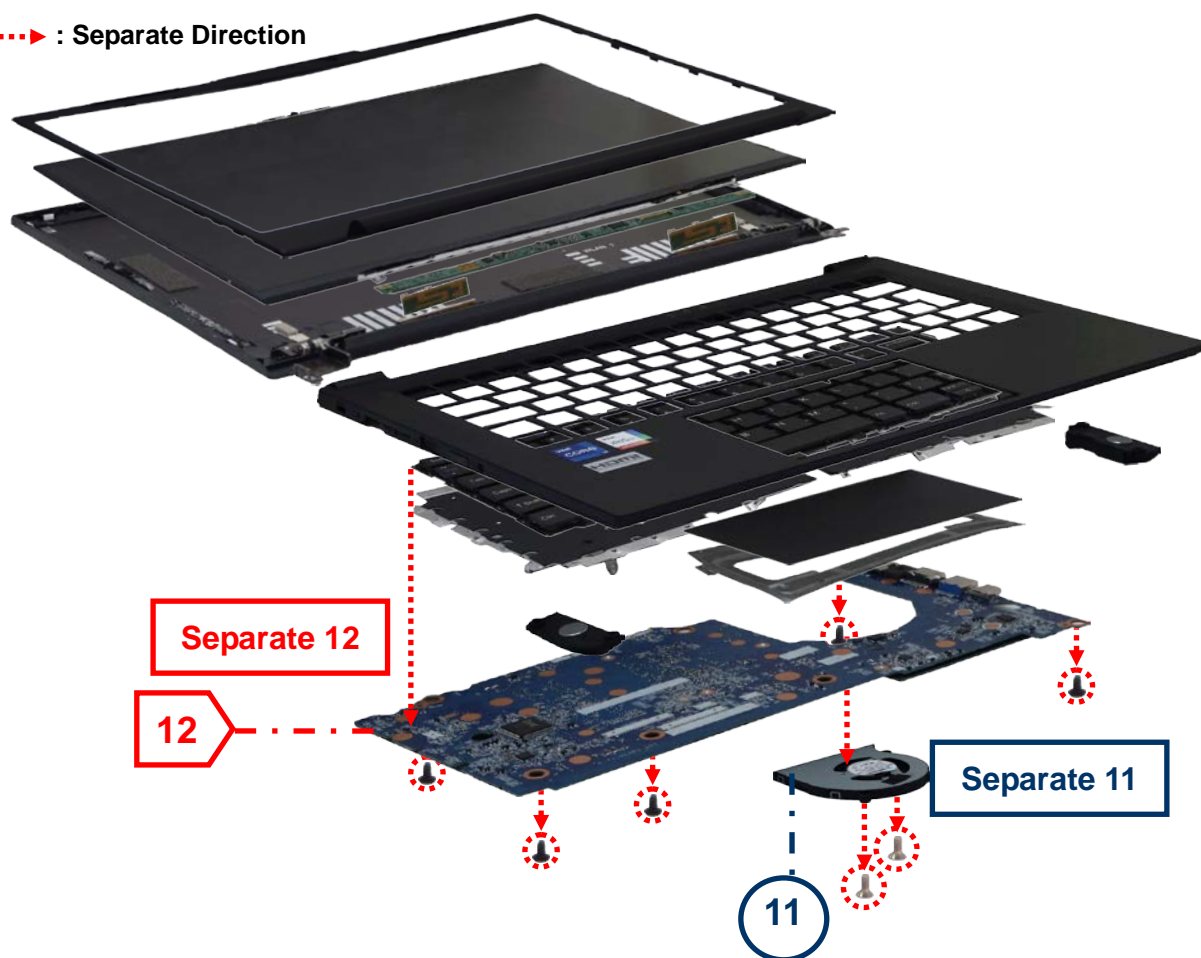
**Separate 10: Unscrew (Cross × 1) the joint to take out part 10.**



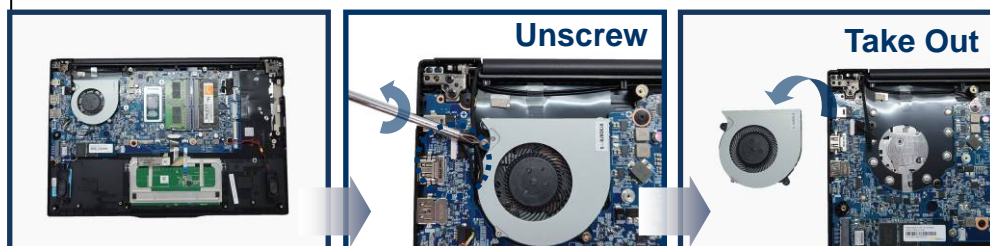
○ : General Part

◡ : Annex VII Part

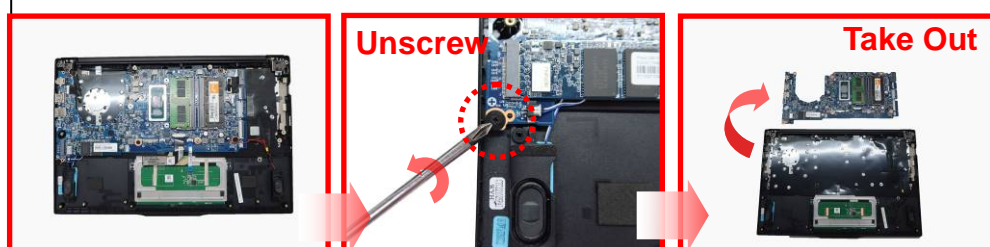
...▶ : Separate Direction



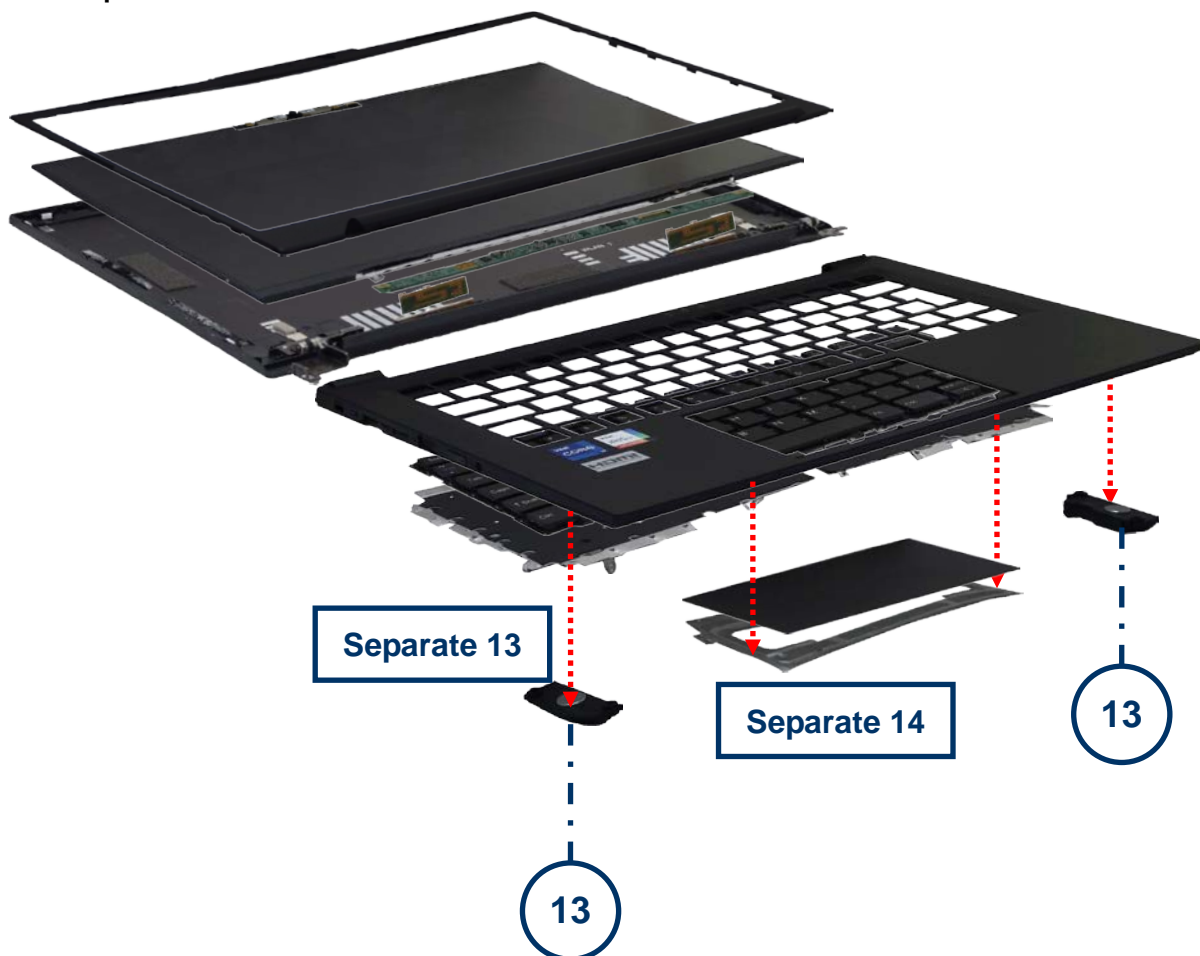
Separate 11: Unscrew (Cross × 2) all joints to take out the part 11.



Separate 12: Unscrew (Cross × 5) all joints to take out the part 12.



- : General Part
- ◻ : Annex VII Part
- ...▶ : Separate Direction



**Separate 13: Take out (Put Together × 2) the part 13.**



**Separate 14: Cut (Extrusion Coat × 12) to take out the object.**





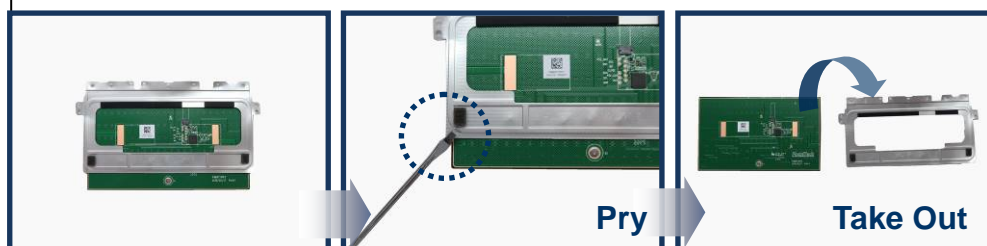
○ : General Part

⬡ : Annex VII Part

⋯▶ : Separate Direction



Separate 15: Pry (Glued Joint × 1) to take out the part 14 from 15.





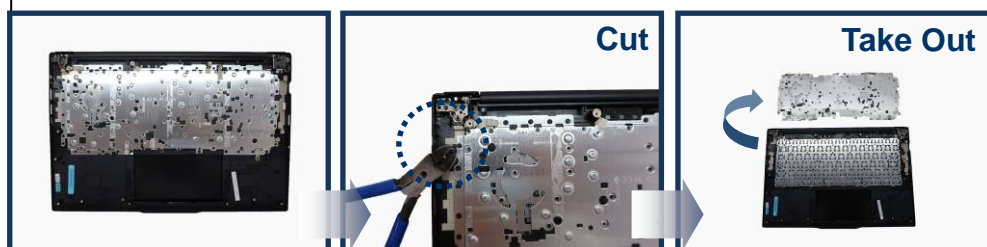
○ : General Part

◡ : Annex VII Part

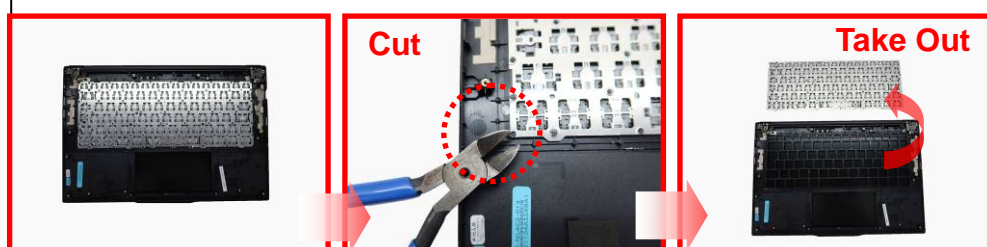
...▶ : Separate Direction



Separate 16: Cut (Extrusion Coat x 34) to take out the part 16.



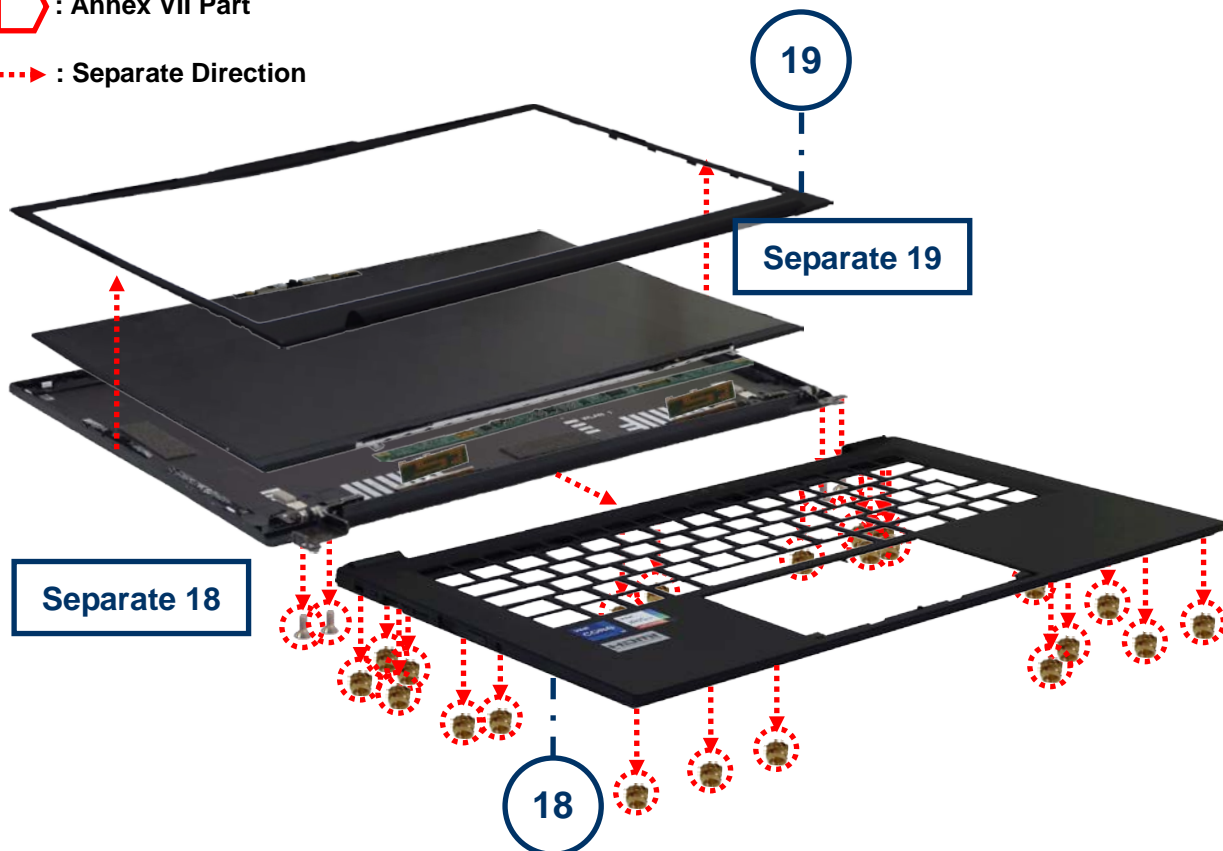
Separate 17: Cut (Extrusion Coat x 58) to take out the part 17.



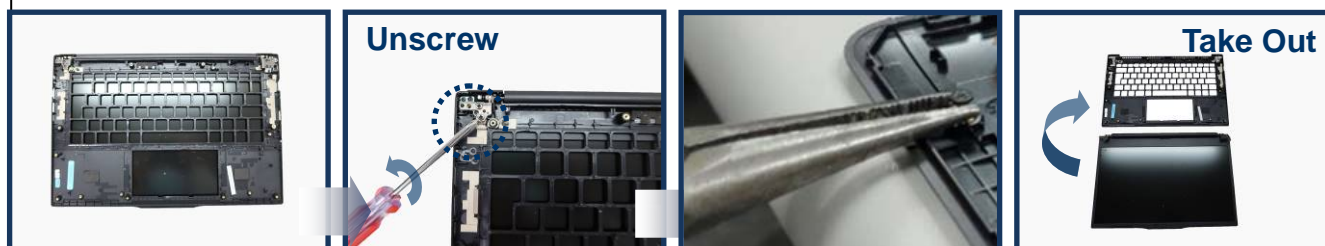
○ : General Part

◻ : Annex VII Part

... : Separate Direction



**Separate 18: Unscrew (Cross × 4 & Nut × 22) all joints to take out the part 18.**



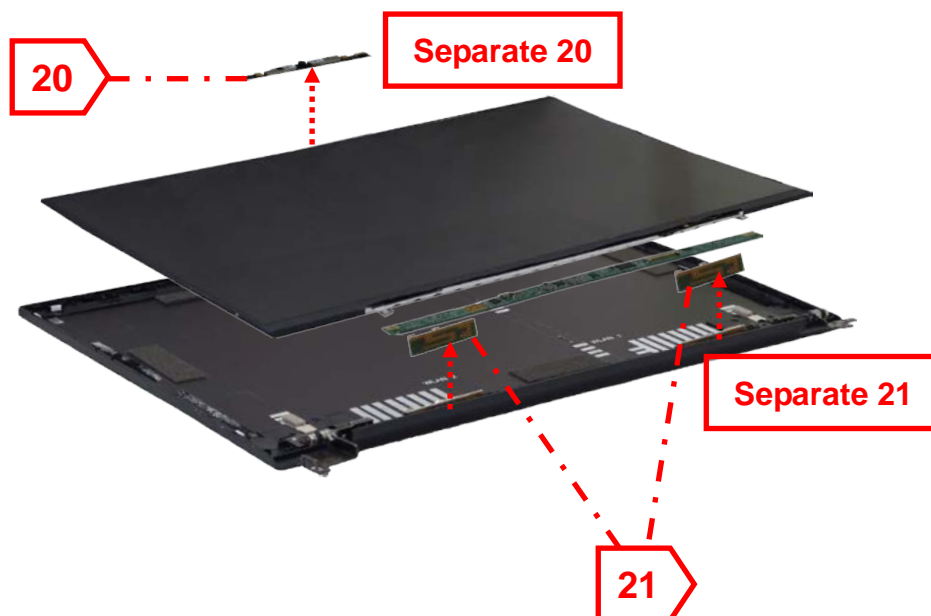
**Separate 19: Pry (Snap Fit × 28) to take out the part 19.**



○ : General Part

▭ : Annex VII Part

...▶ : Separate Direction



**Separate 20: Take out (Put Together × 1) the part 20.**



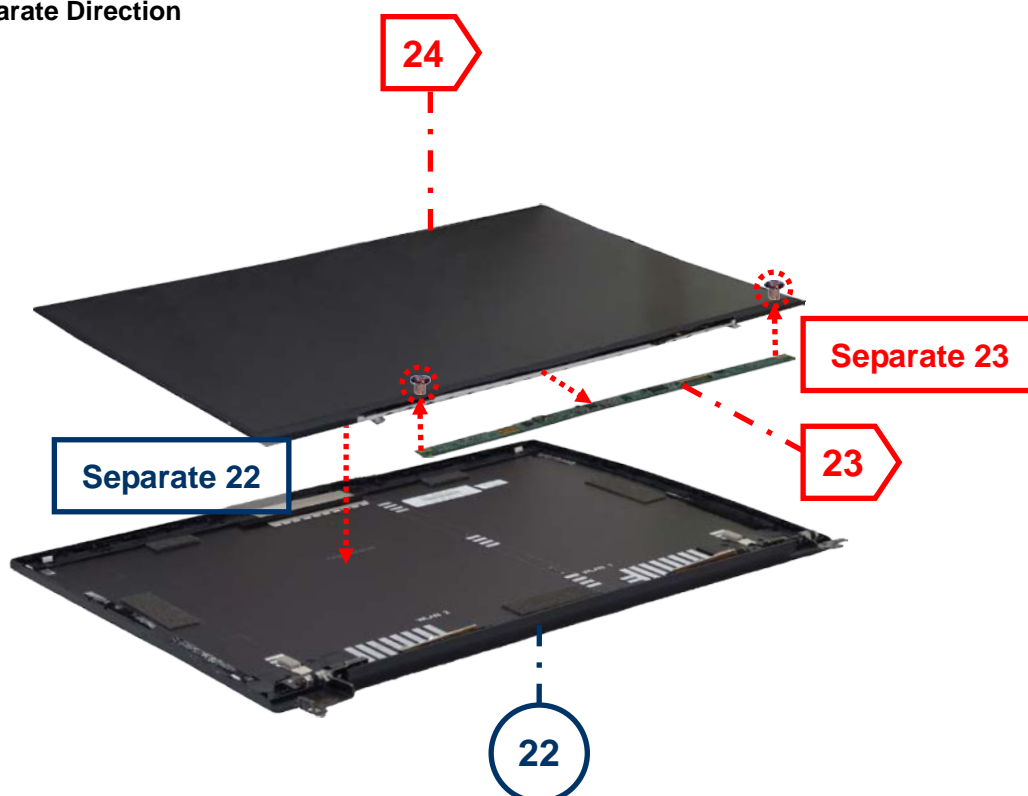
**Separate 21: Pull out (Wire Connection × 4) the part 21.**



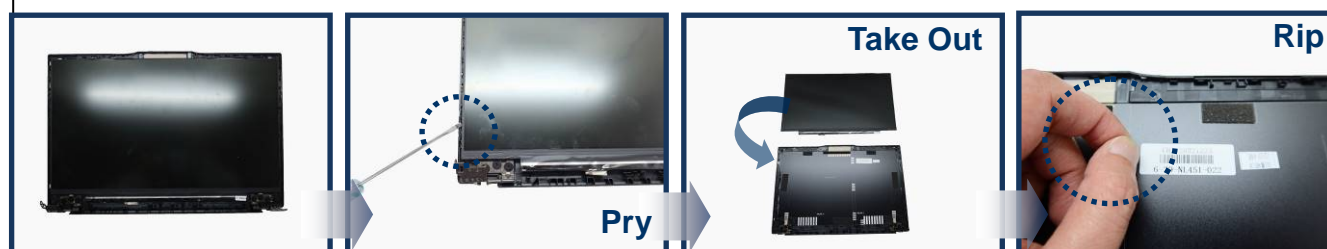
○ : General Part

⬡ : Annex VII Part

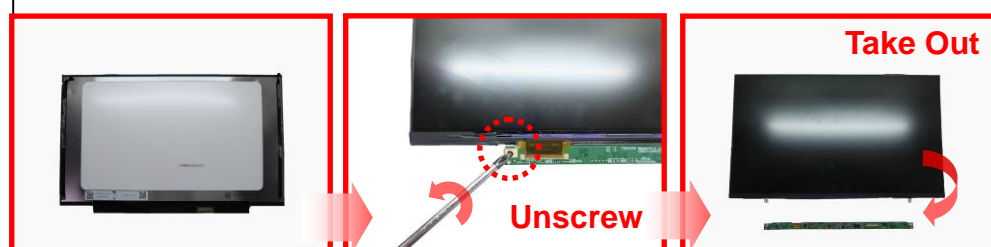
⋯▶ : Separate Direction



**Separate 22: Pry (Glued Joint × 1) to take out the part 22, and rip (Glued Joint × 1) the label.**



**Separate 23: Unscrew (Cross × 2) all joints to take out the part 23 from 24.**





## 2. WEEE Annex VII (components with special handling needs)

Items in this table contain materials with special handling needs. However, the product do not include any "nonstandard or new" substances or technologies.

### NOTEBOOK

No.	Name	Quantity	Weight(g)	Annex VII Materials	Page
<b>A3</b>	<b>Battery Pack</b>	<b>1</b>	<b>213</b>	<b>Batteries</b>	<b>10</b>
<b>A4</b>	<b>PCB</b>	<b>1</b>	<b>7</b>	<b>Printed Circuit Assemblies &gt; 10 cm<sup>2</sup></b>	<b>10</b>
<b>A5</b>	<b>Button Battery</b>	<b>1</b>	<b>3</b>	<b>Batteries</b>	<b>11</b>
<b>A6</b>	<b>PCB</b>	<b>1</b>	<b>7</b>	<b>Printed Circuit Assemblies &gt; 10 cm<sup>2</sup></b>	<b>11</b>
<b>A7</b>	<b>Wi-Fi Module</b>	<b>1</b>	<b>2</b>	<b>Printed Circuit Assemblies &gt; 10 cm<sup>2</sup></b>	<b>12</b>
<b>A9</b>	<b>RAM</b>	<b>2</b>	<b>18</b>	<b>Printed Circuit Assemblies &gt; 10 cm<sup>2</sup></b>	<b>13</b>
<b>A10</b>	<b>SSD</b>	<b>1</b>	<b>7</b>	<b>Printed Circuit Assemblies &gt; 10 cm<sup>2</sup></b>	<b>13</b>
<b>A12</b>	<b>Main Board</b>	<b>1</b>	<b>106</b>	<b>Printed Circuit Assemblies &gt; 10 cm<sup>2</sup></b>	<b>14</b>
<b>A15</b>	<b>Touchpad</b>	<b>1</b>	<b>25</b>	<b>Printed Circuit Assemblies &gt; 10 cm<sup>2</sup></b>	<b>16</b>
<b>A17</b>	<b>Keyboard</b>	<b>1</b>	<b>52</b>	<b>Printed Circuit Assemblies &gt; 10 cm<sup>2</sup></b>	<b>17</b>
<b>A20</b>	<b>PCB</b>	<b>1</b>	<b>1</b>	<b>Printed Circuit Assemblies &gt; 10 cm<sup>2</sup></b>	<b>19</b>
<b>A21</b>	<b>PCB</b>	<b>1</b>	<b>1</b>	<b>Printed Circuit Assemblies &gt; 10 cm<sup>2</sup></b>	<b>19</b>
<b>A23</b>	<b>PCB</b>	<b>1</b>	<b>5</b>	<b>Printed Circuit Assemblies &gt; 10 cm<sup>2</sup></b>	<b>20</b>
<b>A24</b>	<b>LCD</b>	<b>1</b>	<b>258</b>	<b>LCD's &gt; 100 cm<sup>2</sup></b>	<b>20</b>